



# INTERNATIONAL GEMOLOGICAL INSTITUTE

## DIAMOND REPORT

**ELECTRONIC COPY**

June 17, 2022  
IGI Report Number 530232371  
Description NATURAL DIAMOND  
Shape and Cutting Style ROUND BRILLIANT  
Measurements 3.66 - 3.69 x 2.27 mm

### GRADING RESULTS

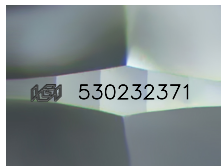
Carat Weight 0.19 CARAT  
Color Grade D  
Clarity Grade VS 1  
Cut Grade EXCELLENT

### ADDITIONAL GRADING INFORMATION

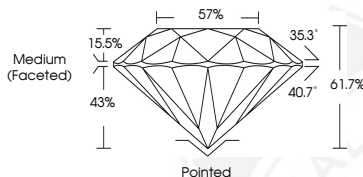
Polish EXCELLENT  
Symmetry EXCELLENT  
Fluorescence NONE  
Identification Features CRYSTAL  
Inscription(s) IGI 530232371  
Comments: IDEAL CUT ROUND BRILLIANT



530232371



Sample Image Used



### COLOR

D - F	G - J	K - M	N - R	S - Z	FANCY
Colorless	Near Colorless	Slightly Tinted	Very Light Color	Light Color	

### CLARITY

IF	VVS <sup>1-2</sup>	VS <sup>1-2</sup>	SI <sup>1-2</sup>	I <sup>1-2</sup>
Internally Flawless	Very Very Slightly Included	Very Slightly Included	Slightly Included	Included



June 17, 2022  
IGI Report Number 530232371  
NATURAL DIAMOND  
ROUND BRILLIANT  
3.66 - 3.69 x 2.27 mm  
Carat Weight 0.19 CARAT  
Color Grade D  
Clarity Grade VS 1  
Cut Grade EXCELLENT  
Polish EXCELLENT  
Symmetry EXCELLENT  
Fluorescence NONE  
Inscription(s) IGI 530232371  
Comments: IDEAL CUT ROUND BRILLIANT



June 17, 2022  
IGI Report Number 530232371  
NATURAL DIAMOND  
ROUND BRILLIANT  
3.66 - 3.69 x 2.27 mm  
Carat Weight 0.19 CARAT  
Color Grade D  
Clarity Grade VS 1  
Cut Grade EXCELLENT  
Polish EXCELLENT  
Symmetry EXCELLENT  
Fluorescence NONE  
Inscription(s) IGI 530232371  
Comments: IDEAL CUT ROUND BRILLIANT

