



INTERNATIONAL GEMOLOGICAL INSTITUTE

DIAMOND REPORT

ELECTRONIC COPY

July 28, 2022
IGI Report Number 533201750
Description NATURAL DIAMOND
Shape and Cutting Style ROUND BRILLIANT
Measurements 5.11 - 5.13 x 3.20 mm

GRADING RESULTS

Carat Weight 0.51 CARAT
Color Grade I
Clarity Grade VS 1
Cut Grade EXCELLENT

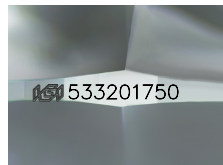
ADDITIONAL GRADING INFORMATION

Polish EXCELLENT
Symmetry EXCELLENT
Fluorescence VERY SLIGHT

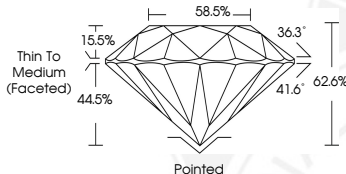
Identification Features CLOUD, CRYSTAL
Inscription(s) IGI 533201750



533201750



Sample Image Used



COLOR

D - F	G - J	K - M	N - R	S - Z	FANCY
Colorless	Near Colorless	Slightly Tinted	Very Light Color	Light Color	

CLARITY

IF	VVS ¹⁻²	VS ¹⁻²	SI ¹⁻²	I ¹⁻²
Internally Flawless	Very Very Slightly Included	Very Slightly Included	Slightly Included	Included

© IGI 2020, International Gemological Institute

FD - 10 20



July 28, 2022
IGI Report Number 533201750
NATURAL DIAMOND
ROUND BRILLIANT
5.11 - 5.13 x 3.20 mm
Carat Weight 0.51 CARAT
Color Grade I
Clarity Grade VS 1
Cut Grade EXCELLENT
Polish EXCELLENT
Symmetry EXCELLENT
Fluorescence VERY SLIGHT
Inscription(s) IGI 533201750



July 28, 2022
IGI Report Number 533201750
NATURAL DIAMOND
ROUND BRILLIANT
5.11 - 5.13 x 3.20 mm
Carat Weight 0.51 CARAT
Color Grade I
Clarity Grade VS 1
Cut Grade EXCELLENT
Polish EXCELLENT
Symmetry EXCELLENT
Fluorescence VERY SLIGHT
Inscription(s) IGI 533201750



THIS DOCUMENT WAS PRODUCED WITH THE FOLLOWING SECURITY MEASURES: SPECIAL DOCUMENT PAPER, INK SCREENS, WATERMARK, BACKGROUND DESIGNS, HOLOGRAM AND OTHER SECURITY FEATURES NOT LISTED AND DO EXCEED DOCUMENT SECURITY INDUSTRY GUIDELINES.