



INTERNATIONAL GEMOLOGICAL INSTITUTE

DIAMOND REPORT

ELECTRONIC COPY

November 17, 2022

IGI Report Number

Description

Shape and Cutting Style

Measurements

544265902

NATURAL DIAMOND

ROUND BRILLIANT

5.24 - 5.27 x 3.22 mm

GRADING RESULTS

Carat Weight

Color Grade

Clarity Grade

Cut Grade

0.53 CARAT

I

VVS 2

EXCELLENT

ADDITIONAL GRADING INFORMATION

Polish

Symmetry

Fluorescence

EXCELLENT

EXCELLENT

NONE

Identification Features

Inscription(s)

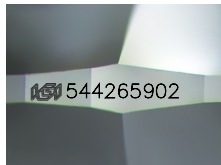
Comments: IDEAL CUT ROUND BRILLIANT

CLOUD

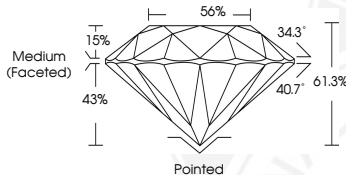
IGI 544265902



544265902



Sample Image Used



COLOR

D - F	G - J	K - M	N - R	S - Z	FANCY
Colorless	Near Colorless	Slightly Tinted	Very Light Color	Light Color	

CLARITY

IF	VVS ¹⁻²	VS ¹⁻²	SI ¹⁻²	I ¹⁻²
Internally Flawless	Very Very Slightly Included	Very Slightly Included	Slightly Included	Included

© IGI 2020, International Gemological Institute

FD - 10 20



November 17, 2022

IGI Report Number 544265902

NATURAL DIAMOND

ROUND BRILLIANT

5.24 - 5.27 x 3.22 mm

Carat Weight 0.53 CARAT

Color Grade I

Clarity Grade VVS 2

Cut Grade EXCELLENT

Polish EXCELLENT

Symmetry EXCELLENT

Fluorescence NONE

Inscription(s) IGI 544265902

Comments: IDEAL CUT ROUND BRILLIANT



November 17, 2022

IGI Report Number 544265902

NATURAL DIAMOND

ROUND BRILLIANT

5.24 - 5.27 x 3.22 mm

Carat Weight 0.53 CARAT

Color Grade I

Clarity Grade VVS 2

Cut Grade EXCELLENT

Polish EXCELLENT

Symmetry EXCELLENT

Fluorescence NONE

Inscription(s) IGI 544265902

Comments: IDEAL CUT ROUND BRILLIANT



THIS DOCUMENT WAS PRODUCED WITH THE FOLLOWING SECURITY MEASURES: SPECIAL DOCUMENT PAPER, INK SCREENS, WATERMARK, BACKGROUND DESIGNS, HOLOGRAM AND OTHER SECURITY FEATURES NOT LISTED AND DO EXCEED DOCUMENT SECURITY INDUSTRY GUIDELINES.