



# INTERNATIONAL GEMOLOGICAL INSTITUTE

## DIAMOND REPORT

**ELECTRONIC COPY**

January 3, 2023  
IGI Report Number 550240003  
Description NATURAL DIAMOND  
Shape and Cutting Style ROUND BRILLIANT  
Measurements 4.48 - 4.52 x 2.54 mm

### GRADING RESULTS

Carat Weight 0.31 CARAT  
Color Grade E  
Clarity Grade INTERNALLY FLAWLESS  
Cut Grade VERY GOOD

### ADDITIONAL GRADING INFORMATION

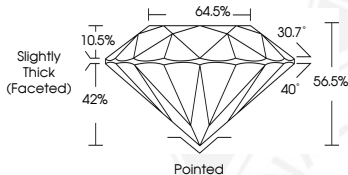
Polish EXCELLENT  
Symmetry EXCELLENT  
Fluorescence NONE  
Inscription(s) IGI 550240003



550240003



Sample Image Used



### COLOR

D - F	G - J	K - M	N - R	S - Z	FANCY
Colorless	Near Colorless	Slightly Tinted	Very Light Color	Light Color	

### CLARITY

IF	VVS <sup>1-2</sup>	VS <sup>1-2</sup>	SI <sup>1-2</sup>	I <sup>1-2</sup>
Internally Flawless	Very Very Slightly Included	Very Slightly Included	Slightly Included	Included

© IGI 2020, International Gemological Institute

FD - 10 20



January 3, 2023  
IGI Report Number 550240003  
NATURAL DIAMOND  
ROUND BRILLIANT  
4.48 - 4.52 x 2.54 mm  
Carat Weight 0.31 CARAT  
Color Grade E  
Clarity Grade INTERNALLY FLAWLESS  
Cut Grade VERY GOOD  
Polish EXCELLENT  
Symmetry EXCELLENT  
Fluorescence NONE  
Inscription(s) IGI 550240003



January 3, 2023  
IGI Report Number 550240003  
NATURAL DIAMOND  
ROUND BRILLIANT  
4.48 - 4.52 x 2.54 mm  
Carat Weight 0.31 CARAT  
Color Grade E  
Clarity Grade INTERNALLY FLAWLESS  
Cut Grade VERY GOOD  
Polish EXCELLENT  
Symmetry EXCELLENT  
Fluorescence NONE  
Inscription(s) IGI 550240003



THIS DOCUMENT WAS PRODUCED WITH THE FOLLOWING SECURITY MEASURES: SPECIAL DOCUMENT PAPER, INK SCREENS, WATERMARK, BACKGROUND DESIGNS, HOLOGRAM AND OTHER SECURITY FEATURES NOT LISTED AND DO EXCEED DOCUMENT SECURITY INDUSTRY GUIDELINES.