

553243515

January 3, 2023

IGI Report Number553243515

DescriptionNATURAL DIAMOND

Shape and Cutting StyleROUND BRILLIANT

Measurements5.71 - 5.76 x 3.55 mm

GRADING RESULTS

Carat Weight0.71 CARAT

Color GradeH

Clarity GradeINTERNALLY FLAWLESS

Cut GradeEXCELLENT

ADDITIONAL GRADING INFORMATION

PolishEXCELLENT

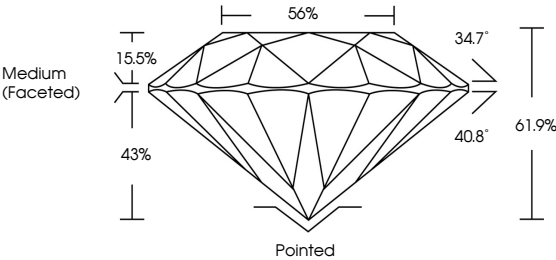
SymmetryEXCELLENT

FluorescenceNONE

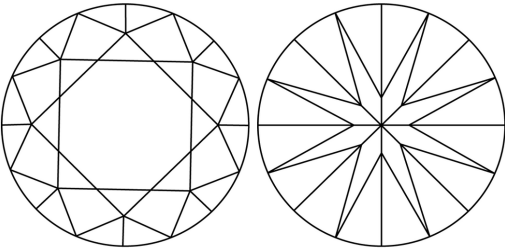
Inscription(s) 553243515

Comments: IDEAL CUT ROUND BRILLIANT

PROPORTIONS

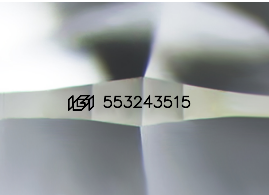


CLARITY CHARACTERISTICS



KEY TO SYMBOLS

Red symbols indicate internal characteristics.
Green symbols indicate external characteristics.



Sample Image Used

COLOR

D - F	G - J	K - M	N - R	S - Z	FANCY
Colorless	Near Colorless	Slightly Tinted	Very Light Color	Light Color	

CLARITY

IF	VVS ¹⁻²	VS ¹⁻²	SI ¹⁻²	I ¹⁻³
Internally Flawless	Very Very Slightly Included	Very Slightly Included	Slightly Included	Included

DIAMOND REPORT



January 3, 2023

IGI Report Number553243515

DescriptionNATURAL DIAMOND

Shape and Cutting StyleROUND BRILLIANT

Measurements5.71 - 5.76 x 3.55 mm

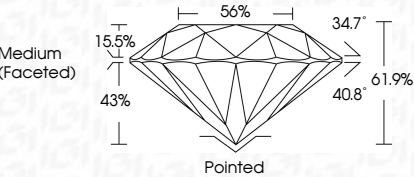
GRADING RESULTS

Carat Weight0.71 CARAT

Color GradeH

Clarity GradeINTERNALLY FLAWLESS

Cut GradeEXCELLENT



ADDITIONAL GRADING INFORMATION

PolishEXCELLENT

SymmetryEXCELLENT

FluorescenceNONE

Inscription(s) 553243515

Comments: IDEAL CUT ROUND BRILLIANT



IGI

January 3, 2023

IGI Report No 553243515

NATURAL DIAMOND

ROUND BRILLIANT

5.71 - 5.76 x 3.55 mm

Carat Weight0.71 CARAT

Color GradeH

Clarity GradeIF

Cut GradeEXCELLENT

Depth61.9%

Table56%

GirdleMedium (Faceted)

CuletPointed

PolishEXCELLENT

SymmetryEXCELLENT

FluorescenceNONE

Inscription(s) 553243515

Comments: IDEAL CUT ROUND BRILLIANT

