



INTERNATIONAL GEMOLOGICAL INSTITUTE

DIAMOND REPORT

ELECTRONIC COPY

February 23, 2023
IGI Report Number 564344927
Description NATURAL DIAMOND
Shape and Cutting Style ROUND BRILLIANT
Measurements 5.14 - 5.18 x 3.18 mm

GRADING RESULTS

Carat Weight 0.51 CARAT
Color Grade H
Clarity Grade SI 1
Cut Grade EXCELLENT

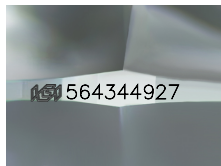
ADDITIONAL GRADING INFORMATION

Polish EXCELLENT
Symmetry EXCELLENT
Fluorescence VERY SLIGHT

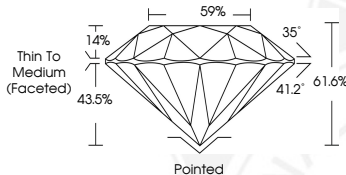
Identification Features CRYSTAL
Inscription(s) IGI 564344927
Comments: IDEAL CUT ROUND BRILLIANT



564344927



Sample Image Used



COLOR

D - F	G - J	K - M	N - R	S - Z	FANCY
Colorless	Near Colorless	Slightly Tinted	Very Light Color	Light Color	

CLARITY

IF	VVS ¹⁻²	VS ¹⁻²	SI ¹⁻²	I ¹⁻²
Internally Flawless	Very Very Slightly Included	Very Slightly Included	Slightly Included	Included

© IGI 2020, International Gemological Institute

FD - 10 20



February 23, 2023
IGI Report Number 564344927
NATURAL DIAMOND
ROUND BRILLIANT
5.14 - 5.18 x 3.18 mm
Carat Weight 0.51 CARAT
Color Grade H
Clarity Grade SI 1
Cut Grade EXCELLENT
Polish EXCELLENT
Symmetry EXCELLENT
Fluorescence VERY SLIGHT
Inscription(s) IGI 564344927
Comments: IDEAL CUT ROUND BRILLIANT



February 23, 2023
IGI Report Number 564344927
NATURAL DIAMOND
ROUND BRILLIANT
5.14 - 5.18 x 3.18 mm
Carat Weight 0.51 CARAT
Color Grade H
Clarity Grade SI 1
Cut Grade EXCELLENT
Polish EXCELLENT
Symmetry EXCELLENT
Fluorescence VERY SLIGHT
Inscription(s) IGI 564344927
Comments: IDEAL CUT ROUND BRILLIANT



THIS DOCUMENT WAS PRODUCED WITH THE FOLLOWING SECURITY MEASURES: SPECIAL DOCUMENT PAPER, INK SCREENS, WATERMARK, BACKGROUND DESIGNS, HOLOGRAM AND OTHER SECURITY FEATURES NOT LISTED AND DO EXCEED DOCUMENT SECURITY INDUSTRY GUIDELINES.