



# INTERNATIONAL GEMOLOGICAL INSTITUTE

## DIAMOND REPORT

**ELECTRONIC COPY**

May 11, 2023  
IGI Report Number 574360329  
Description NATURAL DIAMOND  
Shape and Cutting Style ROUND BRILLIANT  
Measurements 4.49 - 4.52 x 2.56 mm

### GRADING RESULTS

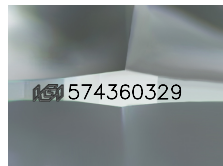
Carat Weight 0.31 CARAT  
Color Grade E  
Clarity Grade INTERNALLY FLAWLESS  
Cut Grade VERY GOOD

### ADDITIONAL GRADING INFORMATION

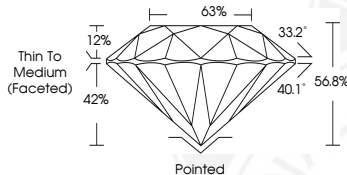
Polish EXCELLENT  
Symmetry EXCELLENT  
Fluorescence NONE  
Inscription(s) IGI 574360329



574360329



Sample Image Used



### COLOR

D - F	G - J	K - M	N - R	S - Z	FANCY
Colorless	Near Colorless	Slightly Tinted	Very Light Color	Light Color	

### CLARITY

IF	VVS <sup>1-2</sup>	VS <sup>1-2</sup>	SI <sup>1-2</sup>	I <sup>1-2</sup>
Internally Flawless	Very Very Slightly Included	Very Slightly Included	Slightly Included	Included

© IGI 2020, International Gemological Institute

FD - 10 20



May 11, 2023  
IGI Report Number 574360329  
NATURAL DIAMOND  
ROUND BRILLIANT  
4.49 - 4.52 x 2.56 mm  
Carat Weight 0.31 CARAT  
Color Grade E  
Clarity Grade INTERNALLY FLAWLESS  
Cut Grade VERY GOOD  
Polish EXCELLENT  
Symmetry EXCELLENT  
Fluorescence NONE  
Inscription(s) IGI 574360329



May 11, 2023  
IGI Report Number 574360329  
NATURAL DIAMOND  
ROUND BRILLIANT  
4.49 - 4.52 x 2.56 mm  
Carat Weight 0.31 CARAT  
Color Grade E  
Clarity Grade INTERNALLY FLAWLESS  
Cut Grade VERY GOOD  
Polish EXCELLENT  
Symmetry EXCELLENT  
Fluorescence NONE  
Inscription(s) IGI 574360329



THIS DOCUMENT WAS PRODUCED WITH THE FOLLOWING SECURITY MEASURES: SPECIAL DOCUMENT PAPER, INK SCREENS, WATERMARK, BACKGROUND DESIGNS, HOLOGRAM AND OTHER SECURITY FEATURES NOT LISTED AND DO EXCEED DOCUMENT SECURITY INDUSTRY GUIDELINES.