



# INTERNATIONAL GEMOLOGICAL INSTITUTE

## DIAMOND REPORT

**ELECTRONIC COPY**

July 19, 2023  
IGI Report Number 583328641  
Description NATURAL DIAMOND  
Shape and Cutting Style ROUND BRILLIANT  
Measurements 5.59 - 5.62 x 3.42 mm

### GRADING RESULTS

Carat Weight 0.65 CARAT  
Color Grade H  
Clarity Grade VS 2  
Cut Grade EXCELLENT

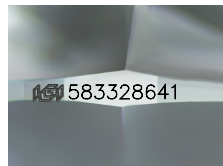
### ADDITIONAL GRADING INFORMATION

Polish EXCELLENT  
Symmetry EXCELLENT  
Fluorescence NONE

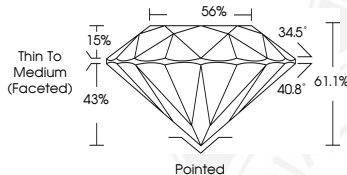
Identification Features CRYSTAL  
Inscription(s) IGI 583328641  
Comments: IDEAL CUT ROUND BRILLIANT



583328641



Sample Image Used



### COLOR

D - F	G - J	K - M	N - R	S - Z	FANCY
Colorless	Near Colorless	Slightly Tinted	Very Light Color	Light Color	

### CLARITY

IF	VVS <sup>1-2</sup>	VS <sup>1-2</sup>	SI <sup>1-2</sup>	I <sup>1-2</sup>
Internally Flawless	Very Very Slightly Included	Very Slightly Included	Slightly Included	Included

© IGI 2020, International Gemological Institute

FD - 10 20



July 19, 2023  
IGI Report Number 583328641  
NATURAL DIAMOND  
ROUND BRILLIANT  
5.59 - 5.62 x 3.42 mm  
Carat Weight 0.65 CARAT  
Color Grade H  
Clarity Grade VS 2  
Cut Grade EXCELLENT  
Polish EXCELLENT  
Symmetry EXCELLENT  
Fluorescence NONE  
Inscription(s) IGI 583328641  
Comments: IDEAL CUT ROUND BRILLIANT



July 19, 2023  
IGI Report Number 583328641  
NATURAL DIAMOND  
ROUND BRILLIANT  
5.59 - 5.62 x 3.42 mm  
Carat Weight 0.65 CARAT  
Color Grade H  
Clarity Grade VS 2  
Cut Grade EXCELLENT  
Polish EXCELLENT  
Symmetry EXCELLENT  
Fluorescence NONE  
Inscription(s) IGI 583328641  
Comments: IDEAL CUT ROUND BRILLIANT



THIS DOCUMENT WAS PRODUCED WITH THE FOLLOWING SECURITY MEASURES: SPECIAL DOCUMENT PAPER, INK SCREENS, WATERMARK, BACKGROUND DESIGNS, HOLOGRAM AND OTHER SECURITY FEATURES NOT LISTED AND DO EXCEED DOCUMENT SECURITY INDUSTRY GUIDELINES.