



**ELECTRONIC COPY**

## LABORATORY GROWN DIAMOND REPORT

May 9, 2022

IGI Report Number **LG524237455**

|                         |                             |
|-------------------------|-----------------------------|
| Description             | LABORATORY GROWN<br>DIAMOND |
| Shape and Cutting Style | ROUND BRILLIANT             |

|              |                       |
|--------------|-----------------------|
| Measurements | 8.11 - 8.16 X 5.01 MM |
|--------------|-----------------------|

## GRADING RESULTS

|               |             |
|---------------|-------------|
| Carat Weight  | 2.04 CARATS |
| Color Grade   | G           |
| Clarity Grade | VS 2        |
| Cut Grade     | IDEAL       |

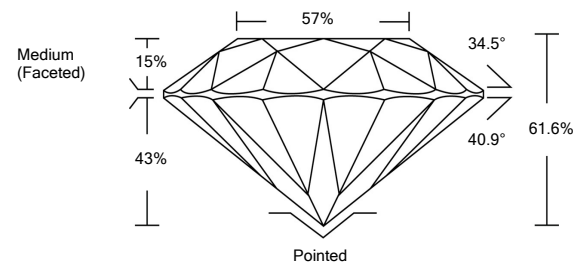
### ADDITIONAL GRADING INFORMATION

|                |                          |
|----------------|--------------------------|
| Polish         | EXCELLENT                |
| Symmetry       | EXCELLENT                |
| Fluorescence   | NONE                     |
| Inscription(s) | LABGROWN IGI LG524237455 |

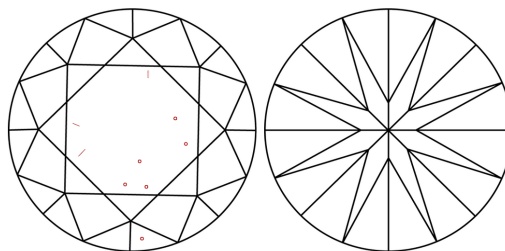
Comments: HEARTS & ARROWS  
This Laboratory Grown Diamond was created by Chemical Vapor Deposition (CVD) growth process and may include post-growth treatment.

LG524237455

## PROPORTIONS



## CLARITY CHARACTERISTICS



### KEY TO SYMBOLS

Red symbols indicate internal characteristics.  
Green symbols indicate external characteristics.



**www.igi.org**

LABORATORY GROWN  
DIAMOND REPORT

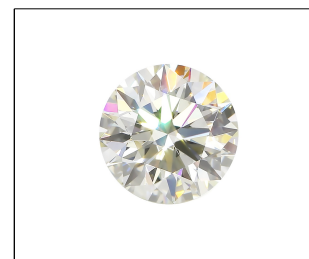
## GRADING SCALES

|                             |                     |  |                             |  |                        |  |                   |  |           |  |
|-----------------------------|---------------------|--|-----------------------------|--|------------------------|--|-------------------|--|-----------|--|
| COLOR GRADING SCALE         | CL                  |  | NC                          |  | FT                     |  | VLT               |  | LT        |  |
|                             | COLORLESS D-F       |  | NEAR COLORLESS G-J          |  | FAINT K-M              |  | VERY LIGHT N-R    |  | LIGHT S-Z |  |
| CLARITY (10x) GRADING SCALE | FL IF               |  | VVS                         |  | VS                     |  | SI                |  | I         |  |
|                             | FLAWLESS INTERNALLY |  | VERY VERY SLIGHTLY INCLUDED |  | VERY SLIGHTLY INCLUDED |  | SLIGHTLY INCLUDED |  | INCLUDED  |  |

The laboratory grown diamond described in this Report (Report) has been graded, tested, analyzed, examined and/or inscribed by International Gemological Institute (I.G.I.). A laboratory grown diamond is one that has essentially the same chemical, physical and optical properties as a mined diamond, with the exception of being grown by man-made processes. This Report is not intended to be used as a substitute for independent current appraisal available to I.G.I. including, without limitation, 10X magnification, corrected triplet loupe, binocular microscope, master color comparison stones, non-contact optical spectrometer, and/or other instruments and/or processes as deemed appropriate by I.G.I. This Report includes additional security features. A duly accredited gemologist or jeweler can advise you with respect to the importance of and interrelationship between cut, color, clarity and carat weight.

**THIS REPORT IS NEITHER A GUARANTEE, VALUATION, NOR APPRAISAL OF THE GEMSTONE DESCRIBED HEREIN. PLEASE REVIEW THE LIMITATIONS AND RESTRICTIONS SET FORTH ONLINE. FOR MORE INFORMATION, PLEASE VISIT [WWW.IGI.ORG](http://WWW.IGI.ORG) OR CALL 1-888-BUY-IGI.**

© INTERNATIONAL GEMOLOGICAL INSTITUTE, INC.



LABGROWN IGI LG524237455

LASERSCRIBE<sup>SM</sup>

Sample Image Used



© IGI 2020, International Gemological Institute

FD - 10 20

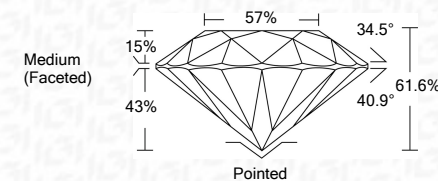
THIS DOCUMENT WAS PRODUCED WITH THE FOLLOWING SECURITY MEASURES: SPECIAL DOCUMENT PAPER, INK SCREENS, WATERMARK, BACKGROUND DESIGNS, HOLOGRAM AND OTHER SECURITY FEATURES NOT LISTED AND DO EXCEED DOCUMENT SECURITY INDUSTRY GUIDELINES

## LABORATORY GROWN DIAMOND REPORT

|                         |                             |
|-------------------------|-----------------------------|
| May 9, 2022             |                             |
| IGI Report Number       | LG524237455                 |
| Description             | LABORATORY GROWN<br>DIAMOND |
| Shape and Cutting Style | ROUND BRILLIANT             |
| Measurements            | 8.11 - 8.16 X 5.01 MM       |

## GRADING RESULTS

|               |             |
|---------------|-------------|
| Carat Weight  | 2.04 CARATS |
| Color Grade   | G           |
| Clarity Grade | VS 2        |
| Cut Grade     | IDEAL       |



### ADDITIONAL GRADING INFORMATION

|                |                          |
|----------------|--------------------------|
| Polish         | EXCELLENT                |
| Symmetry       | EXCELLENT                |
| Fluorescence   | NONE                     |
| Inscription(s) | LABGROWN IGI LG524237455 |

Comments: HEARTS & ARROWS  
This Laboratory Grown Diamond was created by Chemical Vapor Deposition (CVD) growth process and may include post-growth treatment.

[illegible]