



ELECTRONIC COPY

LABORATORY GROWN DIAMOND REPORT

May 10, 2022

IGI Report Number **LG524237577**

Description	LABORATORY GROWN DIAMOND
Shape and Cutting Style	OVAL BRILLIANT

Measurements	10.62 X 7.80 X 4.90 MM
--------------	------------------------

GRADING RESULTS

Carat Weight	2.55 CARATS
Color Grade	F
Clarity Grade	VS 1

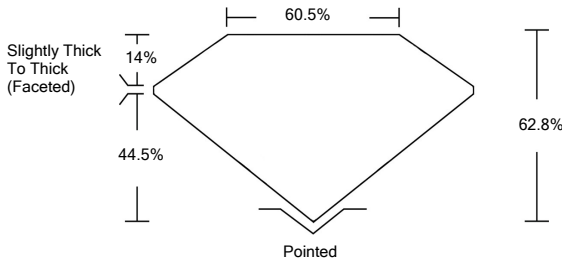
ADDITIONAL GRADING INFORMATION

Polish	EXCELLENT
Symmetry	EXCELLENT
Fluorescence	NONE
Inscription(s)	LABGROWN IGI LG5242375777

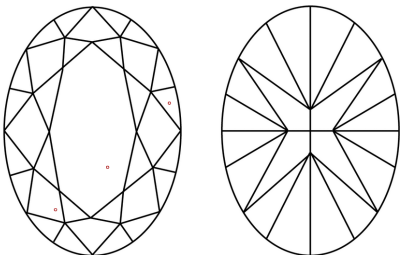
Comments: This Laboratory Grown Diamond was created by Chemical Vapor Deposition (CVD) growth process and may include post-growth treatment.

LG524237577

PROPORTIONS



CLARITY CHARACTERISTICS



KEY TO SYMBOLS

Red symbols indicate internal characteristics.
Green symbols indicate external characteristics.

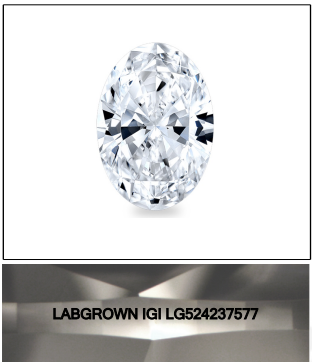
GRADING SCALES

COLOR GRADING SCALE	CL	NC	FT	VLT	LT
	COLORLESS D-F	NEAR COLORLESS G-J	FAINT K-M	VERY LIGHT N-R	LIGHT S-Z
CLARITY (10x) GRADING SCALE	FL	VVS	VS	SI	I
	FLAWLESS INTERNALLY FLAWLESS	VERY VERY SLIGHTLY INCLUDED	VERY SLIGHTLY INCLUDED	SLIGHTLY INCLUDED	INCLUDED

The laboratory grown diamond described in this Report ("Report") has been graded, tested, analyzed, examined and/or inscribed by International Gemological Institute ("IGI"). A laboratory grown diamond is one that has essentially the same chemical, physical and optical properties as a naturally occurring diamond except it was created by man (a manufactured product). IGI employs and utilizes those techniques and equipment currently available to IGI, including, without limitation, 10X magnification, corrected light tube, binocular microscope, master color comparison stones, non-contact refractometer, spectrometer, ultraviolet fluorescence examination, and such other instruments and/or processes as deemed appropriate by IGI. This Report includes advised security features. A duly accredited gemologist or jeweler can advise you with regard to the importance of and interrelationship between cut, color, clarity and carat weight.

THIS REPORT IS NEITHER A GUARANTEE, VALUATION, NOR APPRAISAL OF THE GEMSTONE DESCRIBED HEREIN. PLEASE REVIEW THE LIMITATIONS AND RESTRICTIONS SET FORTH ONLINE. FOR MORE INFORMATION REGARDING OUR POLICIES, CONDITIONS, TERMS AND DISCLAIMERS, PLEASE GO TO WWW.IGI.ORG OR CALL 1-888-BUY-IGI.

© INTERNATIONAL GEMOLOGICAL INSTITUTE, INC.

**LASERSCRIBESM**

Sample Image Used



© IGI 2020, International Gemological Institute

FD - 10 20

www.igi.org

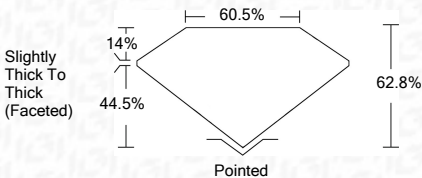
LABORATORY GROWN DIAMOND REPORT

May 10, 2022	
IGI Report Number	LG524237577
Description	LABORATORY GROWN

Shape and Cutting Style	OVAL BRILLIANT
Measurements	10.62 X 7.80 X 4.90 MM

GRADING RESULTS

Carat Weight	2.55 CARATS
Color Grade	F
Clarity Grade	VS 1



ADDITIONAL GRADING INFORMATION

Polish	EXCELLENT
Symmetry	EXCELLENT
Fluorescence	NONE
Inscription(s)	LABGROWN IGI LG524237577

Comments: This Laboratory Grown Diamond was created by Chemical Vapor Deposition (CVD) growth process and may include post-growth treatment.



IGI

IGI Report No. LGS924237577		2.65 CARATS		VS 1		Polished		EXCELLENT		EXCELLENT		NONE		LARGE GROWN IGI		LGS924237577		Comments:		This Laboratory Grown Diamond was created by Chemical Vapor Deposition (CVD) growth process and may include post-growth treatment.	
OVAL BRILLIANT		10.62 X 7.80 X 4.90 MM		F		62.8%		Slightly Thick To Thick (Foofced)		Culet		Symmetry		Fluorescence		Fluorescence		Clarity Grade		Depth	
Carat Weight		Color Grade		Table		60.5%		Girdle		Polish		Fluorescence		Fluorescence		Fluorescence		Table		Girdle	