



**ELECTRONIC COPY**

## LABORATORY GROWN DIAMOND REPORT

May 25, 2022	
IGI Report Number	LG524237610
Description	LABORATORY GROWN DIAMOND
Shape and Cutting Style	CUT CORNERED RECTANGULAR MODIFIED BRILLIANT
Measurements	8.42 X 7.00 X 4.75 MM

## GRADING RESULTS

Carat Weight	2.36 CARATS
Color Grade	I
Clarity Grade	VS 1

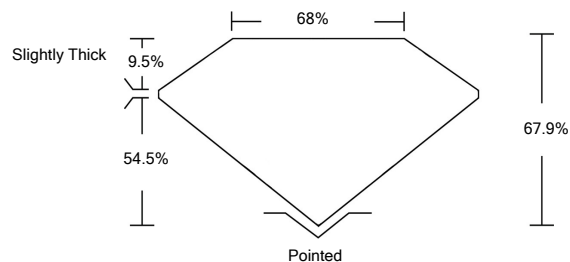
### ADDITIONAL GRADING INFORMATION

Polish	EXCELLENT
Symmetry	EXCELLENT
Fluorescence	NONE

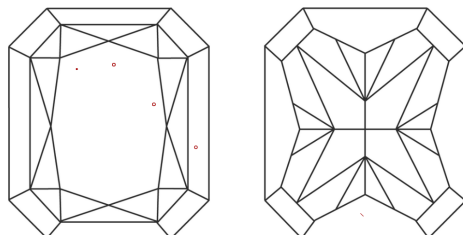
**Inscription(s)** **LABGROWN IGI LG524237610**  
**Comments:** This Laboratory Grown Diamond was created by Chemical Vapor Deposition (CVD) growth process and may include post-growth treatment.

LG524237610

## PROPORTIONS



## CLARITY CHARACTERISTICS



## KEY TO SYMBOLS

Red symbols indicate internal characteristics.  
Green symbols indicate external characteristics.

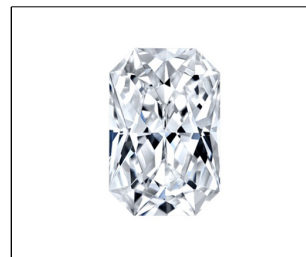
## GRADING SCALES

COLOR GRADING SCALE	CL		NC	FT	VLT	LT
	COLORLESS D-F		NEAR COLORLESS G-J	FAINT K-M	VERY LIGHT N-R	LIGHT S-Z
CLARITY (10x) GRADING SCALE	FL	IF	VVS	VS	SI	I
	FLAWLESS INTERNALLY FLAWLESS		VERY VERY SLIGHTLY INCLUDED	VERY SLIGHTLY INCLUDED	SLIGHTLY INCLUDED	INCLUDED

The laboratory growndiamond described in this Report (Report) has been graded, tested, analyzed, examined and/or inscribed by International Gemological Institute (I.G.I.). A laboratory grown diamond is one that has essentially the same chemical, physical and optical properties as a mined diamond, with the exception of having grown by man's manipulation of natural elements and/or processes. I.G.I. uses the following term currently applicable to I.G.I., including, without limitation, 10X magnification, corrected triplet lense, binocular microscope, master color comparison stones, non-contact optical property device, and/or other instruments and/or processes, to identify the diamond. I.G.I. Report includes advanced security features. A duly accredited gemologist or jeweler can advise you with respect to the importance of and interrelationship between cut, color, clarity and carat weight.

**THIS REPORT IS NEITHER A GUARANTEE, VALUATION, NOR APPRAISAL OF THE GEMSTONE DESCRIBED HEREIN. INFORMATION REGARDING LIMITATIONS AND RESTRICTIONS SET FORTH ONLINE. FOR THE FULL DISCLOSURE OF ALL LIMITATIONS AND DISCLAIMERS, PLEASE GO TO: [WWW.IGI.ORG/ENGLISH/IGI-1888-BUY-IGI/](http://WWW.IGI.ORG/ENGLISH/IGI-1888-BUY-IGI/)**

© INTERNATIONAL GEMOLOGICAL INSTITUTE, INC.



LABGROWN | G | LG524237610

LASERSCRIBE<sup>SM</sup>

Sample Image Used



© IGI 2020, International Gemological Institute

FD - 10 20

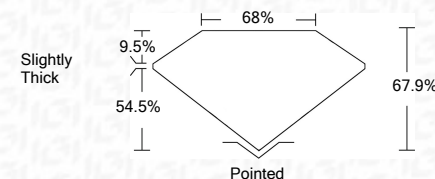
THIS DOCUMENT WAS PRODUCED WITH THE FOLLOWING SECURITY MEASURES: SPECIAL DOCUMENT PAPER, INK SCREENS, WATERMARK BACKGROUND DESIGNS, HOLOGRAM AND OTHER SECURITY FEATURES NOT LISTED AND DO EXCEED DOCUMENT SECURITY INDUSTRY GUIDELINES

## LABORATORY GROWN DIAMOND REPORT

May 25, 2022	
IGI Report Number	LG524237610
Description	LABORATORY GROWN DIAMOND
Shape and Cutting Style	CUT CORNERED RECTANGULAR MODIFIED BRILLIANT
Measurements	8.42 X 7.00 X 4.75 MM

## GRADING RESULTS

Carat Weight	2.36 CARATS
Color Grade	I
Clarity Grade	VS 1



### ADDITIONAL GRADING INFORMATION

Polish	EXCELLENT
Symmetry	EXCELLENT
Fluorescence	NONE
Inscription(s)	LABGROWN IGI LG524237610

Comments: This Laboratory Grown Diamond was created by Chemical Vapor Deposition (CVD) growth process and may include post-growth treatment.



<b>May 25, 2022</b>	<b>IGI Report No LG92427610</b>	<b>CUT CORNERED RECT. MODIFIED BRILLIANT</b>	<b>2.38 CARATS</b>	<b>I</b>	<b>VS-1</b>	<b>67.9%</b>	<b>88%</b>	<b>Slightly Thick</b>	<b>Poished</b>	<b>EXCELLENT</b>	<b>EXCELLENT</b>	<b>NONE</b>	<b>LABGROWN IGI LG92427610</b>	<b>Comments:</b>	<b>This Laboratory Grown Diamond was created by Chemical Vapor Deposition (CVD) growth process and may/ include post-growth</b>
			<b>4.2 x 4.2 x 7.00 x 4.75 MM</b>	<b>Carat Weight</b>	<b>Color Grade</b>	<b>Clarity Grade</b>	<b>Depth</b>	<b>Girdle</b>	<b>Symmetry</b>	<b>Fluorescence</b>	<b>Inscriptions(s)</b>				

This Laboratory Grown Diamond was created by Chemical Vapor Deposition (CVD) growth process and may include post-growth

**www.igi.org**