



459124341

DIAMOND REPORT **ELECTRONIC COPY**

February 23, 2021
 IGI Report Number 459124341
 Description NATURAL DIAMOND
 Shape and Cutting Style ROUND BRILLIANT
 Measurements 6.85 - 6.88 x 4.20 mm

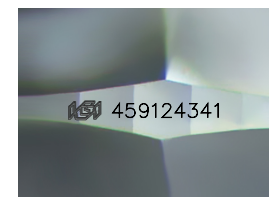
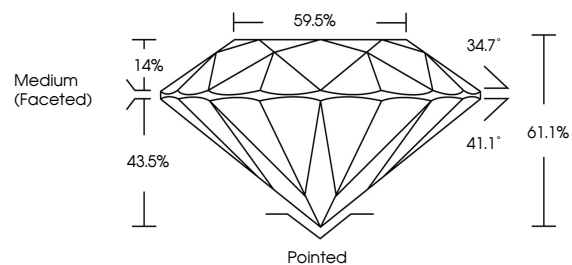
GRADING RESULTS

Carat Weight 1.22 CARAT
 Color Grade M
 Clarity Grade VS 1
 Cut Grade EXCELLENT

ADDITIONAL GRADING INFORMATION

Polish EXCELLENT
 Symmetry EXCELLENT
 Fluorescence NONE
 Inscription(s) IGI 459124341
 Comments: IDEAL CUT ROUND BRILLIANT

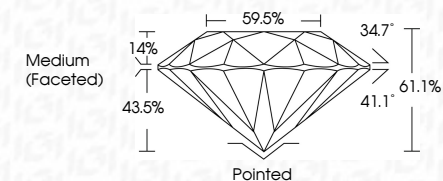
PROPORTIONS



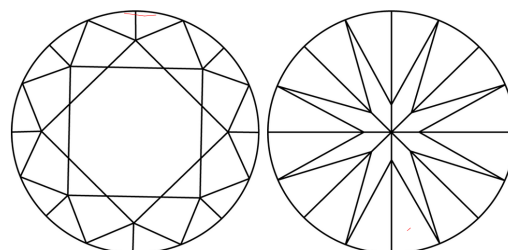
February 23, 2021
 IGI Report Number 459124341
 Description NATURAL DIAMOND
 Shape and Cutting Style ROUND BRILLIANT
 Measurements 6.85 - 6.88 x 4.20 mm

GRADING RESULTS

Carat Weight 1.22 CARAT
 Color Grade M
 Clarity Grade VS 1
 Cut Grade EXCELLENT



CLARITY CHARACTERISTICS



KEY TO SYMBOLS

Red symbols indicate internal characteristics.
 Green symbols indicate external characteristics.

COLOR

D - F	G - J	K - M	N - R	S - Z	FANCY
Colorless	Near Colorless	Slightly Tinted	Very Light Color	Light Color	

CLARITY

IF	VVS ¹⁻²	VS ¹⁻²	SI ¹⁻²	I ¹⁻²
Internally Flawless	Very Very Slightly Included	Very Slightly Included	Slightly Included	Included

ADDITIONAL GRADING INFORMATION

Polish EXCELLENT
 Symmetry EXCELLENT
 Fluorescence NONE
 Inscription(s) IGI 459124341

Comments: IDEAL CUT ROUND BRILLIANT



IGI



February 23, 2021
 IGI Report No. 459124341
 NATURAL DIAMOND
 ROUND BRILLIANT
 6.85 - 6.88 x 4.20 mm
 Carat Weight 1.22 CARAT
 Color Grade M
 Clarity Grade VS 1
 Cut Grade EXCELLENT
 Depth 61.1%
 Table 59.5%
 Girdle Medium (Faceted)
 Culet Pointed
 Polish EXCELLENT
 Symmetry EXCELLENT
 Fluorescence NONE
 Inscription(s) IGI 459124341
 Comments: IDEAL CUT ROUND BRILLIANT