



**INTERNATIONAL
GEMOLOGICAL
INSTITUTE**

485129508

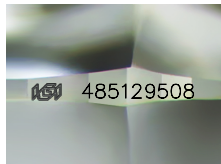


July 29, 2021
IGI Report Number 485129508
NATURAL DIAMOND
ROUND BRILLIANT
5.36 - 5.41 x 3.30 mm
Carat Weight 0.57 CARAT
Color Grade H
Clarity Grade VVS 2
Cut Grade EXCELLENT
Polish EXCELLENT
Symmetry EXCELLENT
Fluorescence VERY SLIGHT
Inscription(s) IGI 485129508
Comments: IDEAL CUT ROUND BRILLIANT

DIAMOND REPORT

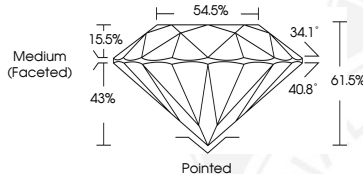
ELECTRONIC COPY

July 29, 2021
IGI Report Number 485129508
Description NATURAL DIAMOND
Shape and Cutting Style ROUND BRILLIANT
Measurements 5.36 - 5.41 x 3.30 mm



GRADING RESULTS

Carat Weight 0.57 CARAT
Color Grade H
Clarity Grade VVS 2
Cut Grade EXCELLENT



ADDITIONAL GRADING INFORMATION

Polish EXCELLENT
Symmetry EXCELLENT
Fluorescence VERY SLIGHT
Identification Features PINPOINT
Inscription(s) IGI 485129508
Comments: IDEAL CUT ROUND BRILLIANT



July 29, 2021
IGI Report Number 485129508
NATURAL DIAMOND
ROUND BRILLIANT
5.36 - 5.41 x 3.30 mm
Carat Weight 0.57 CARAT
Color Grade H
Clarity Grade VVS 2
Cut Grade EXCELLENT
Polish EXCELLENT
Symmetry EXCELLENT
Fluorescence VERY SLIGHT
Inscription(s) IGI 485129508
Comments: IDEAL CUT ROUND BRILLIANT

COLOR

D - F	G - J	K - M	N - R	S - Z	FANCY
Colorless	Near Colorless	Slightly Tinted	Very Light Color	Light Color	

CLARITY

IF	VVS ¹⁻²	VS ¹⁻²	SI ¹⁻²	I ¹⁻²
Internally Flawless	Very Very Slightly Included	Very Slightly Included	Slightly Included	Included

