



516280456

DIAMOND REPORT **ELECTRONIC COPY**

March 25, 2022
 IGI Report Number 516280456
 Description NATURAL DIAMOND
 Shape and Cutting Style ROUND BRILLIANT
 Measurements 6.35 - 6.38 x 4.04 mm

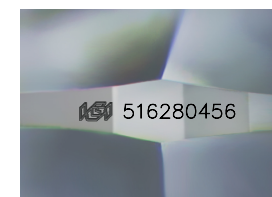
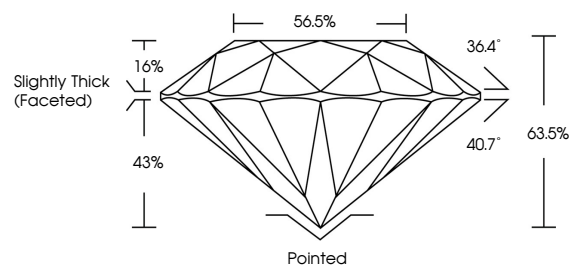
GRADING RESULTS

Carat Weight 1.02 CARAT
 Color Grade F
 Clarity Grade VVS 1
 Cut Grade EXCELLENT

ADDITIONAL GRADING INFORMATION

Polish EXCELLENT
 Symmetry EXCELLENT
 Fluorescence NONE
 Inscription(s) IGI 516280456

PROPORTIONS



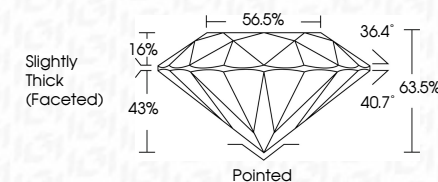
Sample Image Used



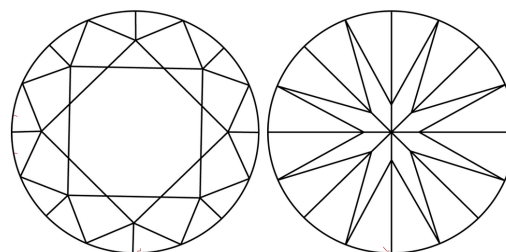
March 25, 2022
 IGI Report Number 516280456
 Description NATURAL DIAMOND
 Shape and Cutting Style ROUND BRILLIANT
 Measurements 6.35 - 6.38 x 4.04 mm

GRADING RESULTS

Carat Weight 1.02 CARAT
 Color Grade F
 Clarity Grade VVS 1
 Cut Grade EXCELLENT



CLARITY CHARACTERISTICS



KEY TO SYMBOLS

Red symbols indicate internal characteristics.
 Green symbols indicate external characteristics.

COLOR

D - F	G - J	K - M	N - R	S - Z	FANCY
Colorless	Near Colorless	Slightly Tinted	Very Light Color	Light Color	

CLARITY

IF	VVS ¹⁻²	VS ¹⁻²	SI ¹⁻²	I ¹⁻³
Internally Flawless	Very Very Slightly Included	Very Slightly Included	Slightly Included	Included

ADDITIONAL GRADING INFORMATION

Polish EXCELLENT
 Symmetry EXCELLENT
 Fluorescence NONE
 Inscription(s) IGI 516280456



IGI

March 25, 2022
 IGI Report No 516280456
 NATURAL DIAMOND
 ROUND BRILLIANT
 6.35 - 6.38 x 4.04 mm
 Carat Weight 1.02 CARAT
 Color Grade F
 Clarity Grade VVS 1
 Cut Grade EXCELLENT
 Depth 63.5%
 Table 56.5%
 Grade Slightly Thick (Faceted)
 Pointed
 EXCELLENT
 EXCELLENT
 NONE
 IGI 516280456