



**INTERNATIONAL
GEMOLOGICAL
INSTITUTE**

519236682

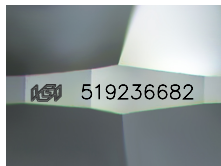


April 25, 2022
IGI Report Number 519236682
NATURAL DIAMOND
ROUND BRILLIANT
4.40 - 4.42 x 2.74 mm
Carat Weight 0.33 CARAT
Color Grade K
Clarity Grade SI 1
Cut Grade EXCELLENT
Polish EXCELLENT
Symmetry EXCELLENT
Fluorescence SLIGHT
Inscription(s) IGI 519236682
Comments: IDEAL CUT ROUND BRILLIANT

DIAMOND REPORT

ELECTRONIC COPY

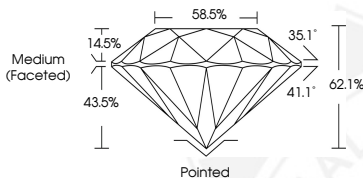
April 25, 2022
IGI Report Number 519236682
Description NATURAL DIAMOND
Shape and Cutting Style ROUND BRILLIANT
Measurements 4.40 - 4.42 x 2.74 mm



Sample Image Used

GRADING RESULTS

Carat Weight 0.33 CARAT
Color Grade K
Clarity Grade SI 1
Cut Grade EXCELLENT



ADDITIONAL GRADING INFORMATION

Polish EXCELLENT
Symmetry EXCELLENT
Fluorescence SLIGHT
Identification Features FEATHER, CLOUD
Inscription(s) IGI 519236682
Comments: IDEAL CUT ROUND BRILLIANT



April 25, 2022
IGI Report Number 519236682
NATURAL DIAMOND
ROUND BRILLIANT
4.40 - 4.42 x 2.74 mm
Carat Weight 0.33 CARAT
Color Grade K
Clarity Grade SI 1
Cut Grade EXCELLENT
Polish EXCELLENT
Symmetry EXCELLENT
Fluorescence SLIGHT
Inscription(s) IGI 519236682
Comments: IDEAL CUT ROUND BRILLIANT

COLOR

| D - F | G - J | K - M | N - R | S - Z | FANCY |
|-----------|----------------|-----------------|------------------|-------------|-------|
| Colorless | Near Colorless | Slightly Tinted | Very Light Color | Light Color | |

CLARITY

| IF | VS ¹⁻² | VS ¹⁻² | SI ¹⁻² | I ¹⁻² |
|---------------------|-----------------------------|------------------------|-------------------|------------------|
| Internally Flawless | Very Very Slightly Included | Very Slightly Included | Slightly Included | Included |

