



**INTERNATIONAL
GEMOLOGICAL
INSTITUTE**

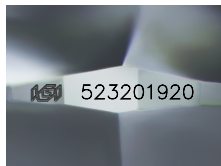
523201920



May 31, 2022
IGI Report Number 523201920
NATURAL DIAMOND
ROUND BRILLIANT
4.63 - 4.66 x 2.94 mm
Carat Weight 0.40 CARAT
Color Grade K
Clarity Grade SI 1
Cut Grade VERY GOOD
Polish EXCELLENT
Symmetry EXCELLENT
Fluorescence NONE
Inscription(s) IGI 523201920

DIAMOND REPORT

ELECTRONIC COPY



Sample Image Used

May 31, 2022
IGI Report Number 523201920
Description NATURAL DIAMOND
Shape and Cutting Style ROUND BRILLIANT
Measurements 4.63 - 4.66 x 2.94 mm

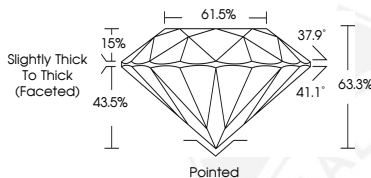
GRADING RESULTS

Carat Weight 0.40 CARAT
Color Grade K
Clarity Grade SI 1
Cut Grade VERY GOOD

ADDITIONAL GRADING INFORMATION

Polish EXCELLENT
Symmetry EXCELLENT
Fluorescence NONE

Identification Features CRYSTAL, FEATHER
Inscription(s) IGI 523201920



COLOR

D - F	G - J	K - M	N - R	S - Z	FANCY
Colorless	Near Colorless	Slightly Tinted	Very Light Color	Light Color	

CLARITY

IF	VVS ¹⁻²	VS ¹⁻²	SI ¹⁻²	I ¹⁻²
Internally Flawless	Very Very Slightly Included	Very Slightly Included	Slightly Included	Included



May 31, 2022
IGI Report Number 523201920
NATURAL DIAMOND
ROUND BRILLIANT
4.63 - 4.66 x 2.94 mm
Carat Weight 0.40 CARAT
Color Grade K
Clarity Grade SI 1
Cut Grade VERY GOOD
Polish EXCELLENT
Symmetry EXCELLENT
Fluorescence NONE
Inscription(s) IGI 523201920

