



528210502

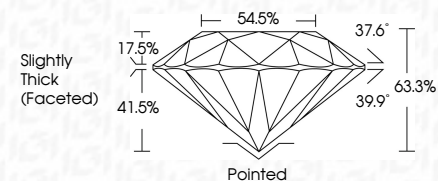
DIAMOND REPORT **ELECTRONIC COPY**



July 7, 2022
 IGI Report Number 528210502
 Description NATURAL DIAMOND
 Shape and Cutting Style ROUND BRILLIANT
 Measurements 6.31 - 6.35 x 4.01 mm

GRADING RESULTS

Carat Weight 1.01 CARAT
 Color Grade I
 Clarity Grade VS 2
 Cut Grade VERY GOOD



July 7, 2022
 IGI Report Number 528210502
 Description NATURAL DIAMOND
 Shape and Cutting Style ROUND BRILLIANT
 Measurements 6.31 - 6.35 x 4.01 mm

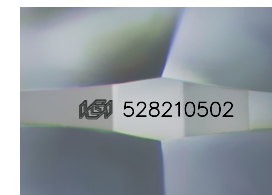
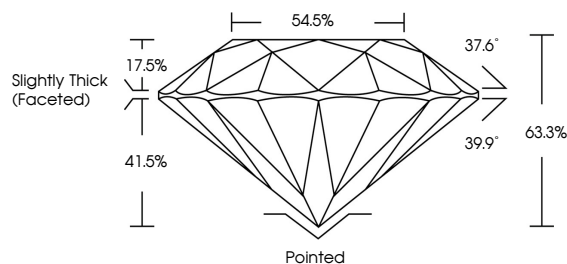
GRADING RESULTS

Carat Weight 1.01 CARAT
 Color Grade I
 Clarity Grade VS 2
 Cut Grade VERY GOOD

ADDITIONAL GRADING INFORMATION

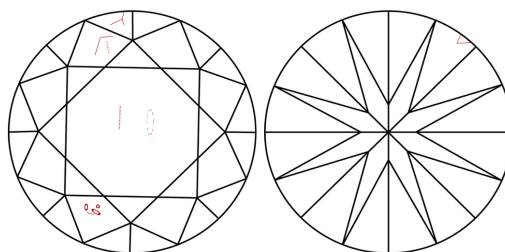
Polish EXCELLENT
 Symmetry EXCELLENT
 Fluorescence NONE
 Inscription(s) IGI 528210502

PROPORTIONS



Sample Image Used

CLARITY CHARACTERISTICS



KEY TO SYMBOLS

Red symbols indicate internal characteristics.
 Green symbols indicate external characteristics.

COLOR

D - F	G - J	K - M	N - R	S - Z	FANCY
Colorless	Near Colorless	Slightly Tinted	Very Light Color	Light Color	

CLARITY

IF	VVS ¹⁻²	VS ¹⁻²	SI ¹⁻²	I ¹⁻³
Internally Flawless	Very Very Slightly Included	Very Slightly Included	Slightly Included	Included

ADDITIONAL GRADING INFORMATION

Polish EXCELLENT
 Symmetry EXCELLENT
 Fluorescence NONE
 Inscription(s) IGI 528210502



IGI



July 7, 2022
 IGI Report No 528210502
 NATURAL DIAMOND
 ROUND BRILLIANT
 6.31 - 6.35 x 4.01 mm
 Carat Weight 1.01 CARAT
 Color Grade I
 Clarity Grade VS 2
 Cut Grade VERY GOOD
 Depth 63.3%
 Table 54.5%
 Girdle Slightly Thick (Faceted)
 Culet Pointed
 Polish EXCELLENT
 Symmetry EXCELLENT
 Fluorescence NONE
 Inscription(s) IGI 528210502