



**INTERNATIONAL
GEMOLOGICAL
INSTITUTE**

528212782

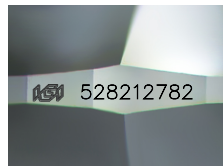


June 27, 2022
IGI Report Number 528212782
NATURAL DIAMOND
ROUND BRILLIANT
3.91 - 3.93 x 2.41 mm
Carat Weight 0.226 CARAT
Color Grade D
Clarity Grade VS 2
Cut Grade EXCELLENT
Polish EXCELLENT
Symmetry EXCELLENT
Fluorescence NONE
Inscription(s) IGI 528212782
Comments: IDEAL CUT ROUND BRILLIANT

DIAMOND REPORT

ELECTRONIC COPY

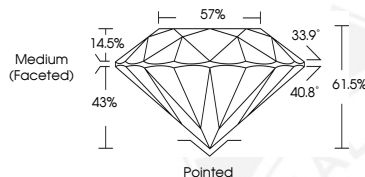
June 27, 2022
IGI Report Number 528212782
Description NATURAL DIAMOND
Shape and Cutting Style ROUND BRILLIANT
Measurements 3.91 - 3.93 x 2.41 mm



Sample Image Used

GRADING RESULTS

Carat Weight 0.226 CARAT
Color Grade D
Clarity Grade VS 2
Cut Grade EXCELLENT



ADDITIONAL GRADING INFORMATION

Polish EXCELLENT
Symmetry EXCELLENT
Fluorescence NONE

Identification Features CLOUD, CRYSTAL
Inscription(s) IGI 528212782
Comments: IDEAL CUT ROUND BRILLIANT



June 27, 2022
IGI Report Number 528212782
NATURAL DIAMOND
ROUND BRILLIANT
3.91 - 3.93 x 2.41 mm
Carat Weight 0.226 CARAT
Color Grade D
Clarity Grade VS 2
Cut Grade EXCELLENT
Polish EXCELLENT
Symmetry EXCELLENT
Fluorescence NONE
Inscription(s) IGI 528212782
Comments: IDEAL CUT ROUND BRILLIANT

COLOR

D - F	G - J	K - M	N - R	S - Z	FANCY
Colorless	Near Colorless	Slightly Tinted	Very Light Color	Light Color	

CLARITY

IF	VVS ¹⁻²	VS ¹⁻²	SI ¹⁻²	I ¹⁻²
Internally Flawless	Very Very Slightly Included	Very Slightly Included	Slightly Included	Included

