



**INTERNATIONAL  
GEMOLOGICAL  
INSTITUTE**

**DIAMOND REPORT**

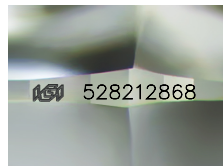
**ELECTRONIC COPY**



528212868

June 2, 2022  
IGI Report Number 528212868  
NATURAL DIAMOND  
ROUND BRILLIANT  
3.61 - 3.63 x 2.23 mm  
Carat Weight 0.182 CARAT  
Color Grade D  
Clarity Grade VS 2  
Cut Grade EXCELLENT  
Polish EXCELLENT  
Symmetry EXCELLENT  
Fluorescence NONE  
Inscription(s) IGI 528212868  
Comments: IDEAL CUT ROUND BRILLIANT

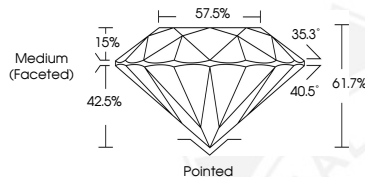
June 2, 2022  
IGI Report Number 528212868  
Description NATURAL DIAMOND  
Shape and Cutting Style ROUND BRILLIANT  
Measurements 3.61 - 3.63 x 2.23 mm



Sample Image Used

**GRADING RESULTS**

Carat Weight 0.182 CARAT  
Color Grade D  
Clarity Grade VS 2  
Cut Grade EXCELLENT



**ADDITIONAL GRADING INFORMATION**

Polish EXCELLENT  
Symmetry EXCELLENT  
Fluorescence NONE  
Identification Features CRYSTAL  
Inscription(s) IGI 528212868  
Comments: IDEAL CUT ROUND BRILLIANT



June 2, 2022  
IGI Report Number 528212868  
NATURAL DIAMOND  
ROUND BRILLIANT  
3.61 - 3.63 x 2.23 mm  
Carat Weight 0.182 CARAT  
Color Grade D  
Clarity Grade VS 2  
Cut Grade EXCELLENT  
Polish EXCELLENT  
Symmetry EXCELLENT  
Fluorescence NONE  
Inscription(s) IGI 528212868  
Comments: IDEAL CUT ROUND BRILLIANT

**COLOR**

D - F      G - J      K - M      N - R      S - Z      FANCY

Colorless      Near Colorless      Slightly Tinted      Very Light Color      Light Color

**CLARITY**

IF      VVS<sup>1-2</sup>      VS<sup>1-2</sup>      SI<sup>1-2</sup>      I<sup>1-2</sup>

Internally Flawless      Very Very Slightly Included      Very Slightly Included      Slightly Included      Included

