



**INTERNATIONAL  
GEMOLOGICAL  
INSTITUTE**

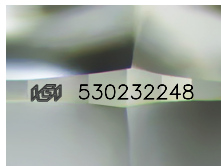
530232248



June 17, 2022  
IGI Report Number 530232248  
NATURAL DIAMOND  
ROUND BRILLIANT  
3.60 - 3.62 x 2.24 mm  
Carat Weight 0.18 CARAT  
Color Grade D  
Clarity Grade VVS 2  
Cut Grade EXCELLENT  
Polish EXCELLENT  
Symmetry EXCELLENT  
Fluorescence NONE  
Inscription(s) IGI 530232248  
Comments: IDEAL CUT ROUND BRILLIANT

**DIAMOND REPORT**

**ELECTRONIC COPY**



Sample Image Used

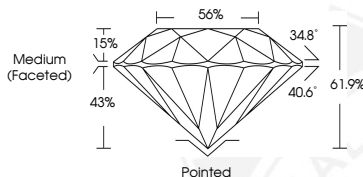
June 17, 2022  
IGI Report Number 530232248  
Description NATURAL DIAMOND  
Shape and Cutting Style ROUND BRILLIANT  
Measurements 3.60 - 3.62 x 2.24 mm

**GRADING RESULTS**

Carat Weight 0.18 CARAT  
Color Grade D  
Clarity Grade VVS 2  
Cut Grade EXCELLENT

**ADDITIONAL GRADING INFORMATION**

Polish EXCELLENT  
Symmetry EXCELLENT  
Fluorescence NONE  
Identification Features CLOUD  
Inscription(s) IGI 530232248  
Comments: IDEAL CUT ROUND BRILLIANT



**COLOR**

D - F	G - J	K - M	N - R	S - Z	FANCY
Colorless	Near Colorless	Slightly Tinted	Very Light Color	Light Color	

**CLARITY**

IF	VVS <sup>1-2</sup>	VS <sup>1-2</sup>	SI <sup>1-2</sup>	I <sup>1-2</sup>
Internally Flawless	Very Very Slightly Included	Very Slightly Included	Slightly Included	Included



June 17, 2022  
IGI Report Number 530232248  
NATURAL DIAMOND  
ROUND BRILLIANT  
3.60 - 3.62 x 2.24 mm  
Carat Weight 0.18 CARAT  
Color Grade D  
Clarity Grade VVS 2  
Cut Grade EXCELLENT  
Polish EXCELLENT  
Symmetry EXCELLENT  
Fluorescence NONE  
Inscription(s) IGI 530232248  
Comments: IDEAL CUT ROUND BRILLIANT

