



532233801

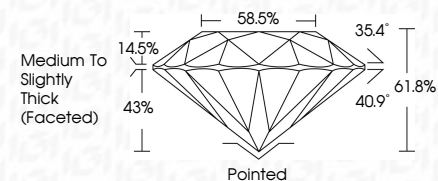
DIAMOND REPORT **ELECTRONIC COPY**



July 20, 2022
 IGI Report Number 532233801
 Description NATURAL DIAMOND
 Shape and Cutting Style ROUND BRILLIANT
 Measurements 7.45 - 7.48 x 4.61 mm

GRADING RESULTS

Carat Weight 1.59 CARAT
 Color Grade F
 Clarity Grade SI 1
 Cut Grade EXCELLENT



July 20, 2022
 IGI Report Number 532233801
 Description NATURAL DIAMOND
 Shape and Cutting Style ROUND BRILLIANT
 Measurements 7.45 - 7.48 x 4.61 mm

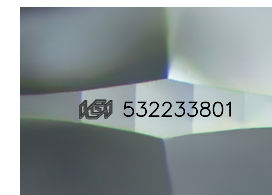
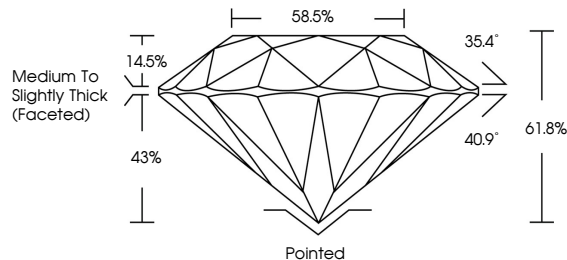
GRADING RESULTS

Carat Weight 1.59 CARAT
 Color Grade F
 Clarity Grade SI 1
 Cut Grade EXCELLENT

ADDITIONAL GRADING INFORMATION

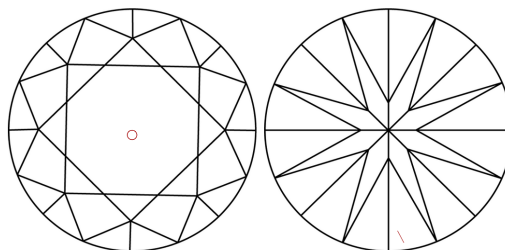
Polish EXCELLENT
 Symmetry EXCELLENT
 Fluorescence SLIGHT
 Inscription(s) IGI 532233801
 Comments: IDEAL CUT ROUND BRILLIANT

PROPORTIONS



Sample Image Used

CLARITY CHARACTERISTICS



KEY TO SYMBOLS

Red symbols indicate internal characteristics.
 Green symbols indicate external characteristics.

COLOR

D - F	G - J	K - M	N - R	S - Z	FANCY
Colorless	Near Colorless	Slightly Tinted	Very Light Color	Light Color	

CLARITY

IF	VVS ¹⁻²	VS ¹⁻²	SI ¹⁻²	I ¹⁻³
Internally Flawless	Very Very Slightly Included	Very Slightly Included	Slightly Included	Included

ADDITIONAL GRADING INFORMATION

Polish EXCELLENT
 Symmetry EXCELLENT
 Fluorescence SLIGHT
 Inscription(s) IGI 532233801
 Comments: IDEAL CUT ROUND BRILLIANT



IGI

July 20, 2022
 IGI Report No 532233801
 NATURAL DIAMOND
 ROUND BRILLIANT
 7.45 - 7.48 x 4.61 mm
 Carat Weight 1.59 CARAT
 Color Grade F
 Clarity Grade SI 1
 Cut Grade EXCELLENT
 Depth 61.8%
 Table 58.5%
 Girdle Medium To Slightly Thick (Faceted)
 Curf Pointed
 Polish EXCELLENT
 Symmetry EXCELLENT
 Fluorescence SLIGHT
 Inscription(s) IGI 532233801
 Comments: IDEAL CUT ROUND BRILLIANT