



532233847

**DIAMOND REPORT ELECTRONIC COPY**

July 7, 2022  
 IGI Report Number 532233847  
 Description NATURAL DIAMOND  
 Shape and Cutting Style ROUND BRILLIANT  
 Measurements 6.29 - 6.33 x 4.04 mm

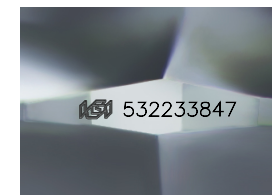
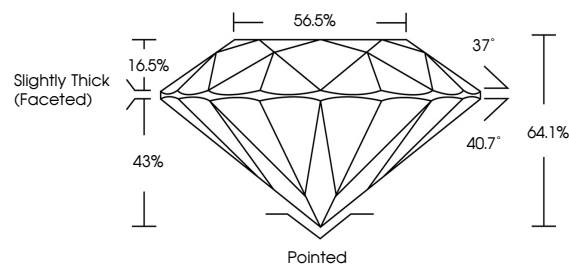
**GRADING RESULTS**

Carat Weight 1.01 CARAT  
 Color Grade I  
 Clarity Grade VVS 1  
 Cut Grade VERY GOOD

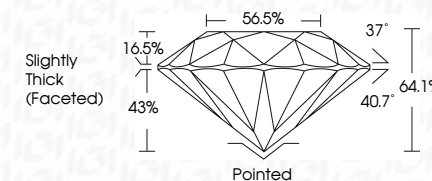
**ADDITIONAL GRADING INFORMATION**

Polish EXCELLENT  
 Symmetry EXCELLENT  
 Fluorescence NONE  
 Inscription(s) IGI 532233847

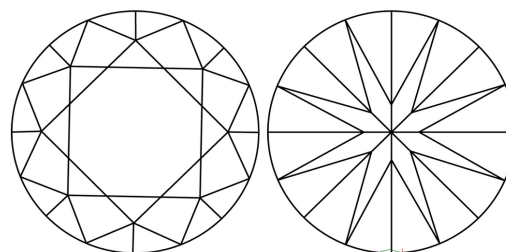
**PROPORTIONS**



Sample Image Used



**CLARITY CHARACTERISTICS**



**KEY TO SYMBOLS**

Red symbols indicate internal characteristics.  
 Green symbols indicate external characteristics.

**COLOR**

| D - F     | G - J          | K - M           | N - R            | S - Z       | FANCY |
|-----------|----------------|-----------------|------------------|-------------|-------|
| Colorless | Near Colorless | Slightly Tinted | Very Light Color | Light Color |       |

**CLARITY**

| IF                  | VVS <sup>1-2</sup>          | VS <sup>1-2</sup>      | SI <sup>1-2</sup> | I <sup>1-3</sup> |
|---------------------|-----------------------------|------------------------|-------------------|------------------|
| Internally Flawless | Very Very Slightly Included | Very Slightly Included | Slightly Included | Included         |

**ADDITIONAL GRADING INFORMATION**

Polish EXCELLENT  
 Symmetry EXCELLENT  
 Fluorescence NONE  
 Inscription(s) IGI 532233847



**IGI**

July 7, 2022  
 IGI Report No 532233847  
 NATURAL DIAMOND  
 ROUND BRILLIANT  
 6.29 - 6.33 x 4.04 mm  
 Carat Weight 1.01 CARAT  
 Color Grade I  
 Clarity Grade VVS 1  
 Cut Grade VERY GOOD  
 Depth 64.1%  
 Table 56.5%  
 Girdle Slightly Thick (Faceted)  
 Culet Pointed  
 Polish EXCELLENT  
 Symmetry EXCELLENT  
 Fluorescence NONE  
 Inscription(s) IGI 532233847