



532233849

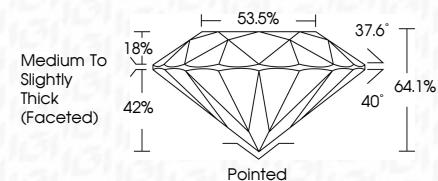
DIAMOND REPORT ELECTRONIC COPY



July 7, 2022
 IGI Report Number 532233849
 Description NATURAL DIAMOND
 Shape and Cutting Style ROUND BRILLIANT
 Measurements 6.28 - 6.31 x 4.03 mm

GRADING RESULTS

Carat Weight 1.00 CARAT
 Color Grade F
 Clarity Grade VS 1
 Cut Grade VERY GOOD



July 7, 2022
 IGI Report Number 532233849
 Description NATURAL DIAMOND
 Shape and Cutting Style ROUND BRILLIANT
 Measurements 6.28 - 6.31 x 4.03 mm

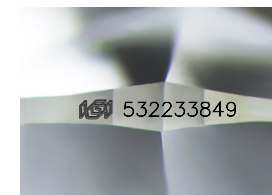
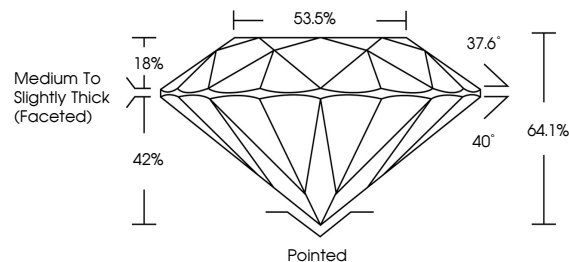
GRADING RESULTS

Carat Weight 1.00 CARAT
 Color Grade F
 Clarity Grade VS 1
 Cut Grade VERY GOOD

ADDITIONAL GRADING INFORMATION

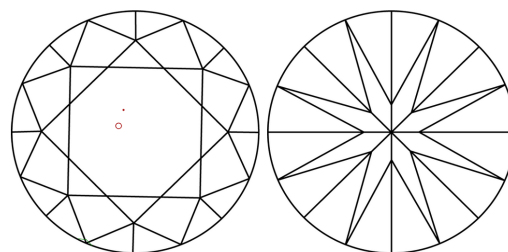
Polish EXCELLENT
 Symmetry EXCELLENT
 Fluorescence NONE
 Inscription(s) IGI 532233849

PROPORTIONS



Sample Image Used

CLARITY CHARACTERISTICS



KEY TO SYMBOLS

Red symbols indicate internal characteristics.
 Green symbols indicate external characteristics.

COLOR

D - F	G - J	K - M	N - R	S - Z	FANCY
Colorless	Near Colorless	Slightly Tinted	Very Light Color	Light Color	

CLARITY

IF	VVS ¹⁻²	VS ¹⁻²	SI ¹⁻²	I ¹⁻³
Internally Flawless	Very Very Slightly Included	Very Slightly Included	Slightly Included	Included

ADDITIONAL GRADING INFORMATION

Polish EXCELLENT
 Symmetry EXCELLENT
 Fluorescence NONE
 Inscription(s) IGI 532233849



IGI



July 7, 2022
 IGI Report No 532233849
 NATURAL DIAMOND
 ROUND BRILLIANT
 6.28 - 6.31 x 4.03 mm
 Carat Weight 1.00 CARAT
 Color Grade F
 Clarity Grade VS 1
 Cut Grade VERY GOOD
 Depth 64.1%
 Table 53.5%
 Girdle Medium To Slightly Thick (Faceted)
 Culet Pointed
 Polish EXCELLENT
 Symmetry EXCELLENT
 Fluorescence NONE
 Inscription(s) IGI 532233849