



**INTERNATIONAL
GEMOLOGICAL
INSTITUTE**

DIAMOND REPORT

ELECTRONIC COPY

September 15, 2022
 IGI Report Number 536270419
 Description NATURAL DIAMOND
 Shape and Cutting Style ROUND BRILLIANT
 Measurements 6.09 - 6.12 x 3.86 mm

GRADING RESULTS

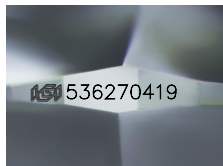
Carat Weight 0.90 CARAT
 Color Grade J
 Clarity Grade SI 1
 Cut Grade EXCELLENT

ADDITIONAL GRADING INFORMATION

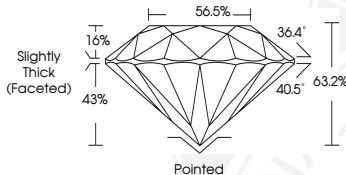
Polish EXCELLENT
 Symmetry EXCELLENT
 Fluorescence NONE
 Identification Features CLOUD, FEATHER
 Inscription(s) IGI 536270419



536270419



Sample Image Used



COLOR

D - F	G - J	K - M	N - R	S - Z	FANCY
Colorless	Near Colorless	Slightly Tinted	Very Light Color	Light Color	

CLARITY

IF	VVS ¹⁻²	VS ¹⁻²	SI ¹⁻²	I ¹⁻²
Internally Flawless	Very Very Slightly Included	Very Slightly Included	Slightly Included	Included

© IGI 2020, International Gemological Institute

FD - 10 20



September 15, 2022
 IGI Report Number 536270419
 NATURAL DIAMOND
 ROUND BRILLIANT
 6.09 - 6.12 x 3.86 mm
 Carat Weight 0.90 CARAT
 Color Grade J
 Clarity Grade SI 1
 Cut Grade EXCELLENT
 Polish EXCELLENT
 Symmetry EXCELLENT
 Fluorescence NONE
 Inscription(s) IGI 536270419



September 15, 2022
 IGI Report Number 536270419
 NATURAL DIAMOND
 ROUND BRILLIANT
 6.09 - 6.12 x 3.86 mm
 Carat Weight 0.90 CARAT
 Color Grade J
 Clarity Grade SI 1
 Cut Grade EXCELLENT
 Polish EXCELLENT
 Symmetry EXCELLENT
 Fluorescence NONE
 Inscription(s) IGI 536270419



THIS DOCUMENT WAS PRODUCED WITH THE FOLLOWING SECURITY MEASURES: SPECIAL DOCUMENT PAPER, INK SCREENS, WATERMARK, BACKGROUND DESIGNS, HOLOGRAM AND OTHER SECURITY FEATURES NOT LISTED AND DO EXCEED DOCUMENT SECURITY INDUSTRY GUIDELINES.