



538269815

**DIAMOND REPORT** **ELECTRONIC COPY**



September 14, 2022

IGI Report Number 538269815  
Description NATURAL DIAMOND  
Shape and Cutting Style ROUND BRILLIANT  
Measurements 6.39 - 6.42 x 3.98 mm

**GRADING RESULTS**

Carat Weight 1.01 CARAT  
Color Grade H  
Clarity Grade VS 1  
Cut Grade EXCELLENT

September 14, 2022

IGI Report Number 538269815  
Description NATURAL DIAMOND  
Shape and Cutting Style ROUND BRILLIANT  
Measurements 6.39 - 6.42 x 3.98 mm

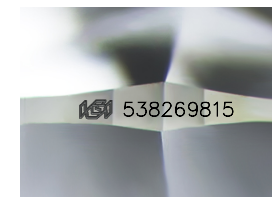
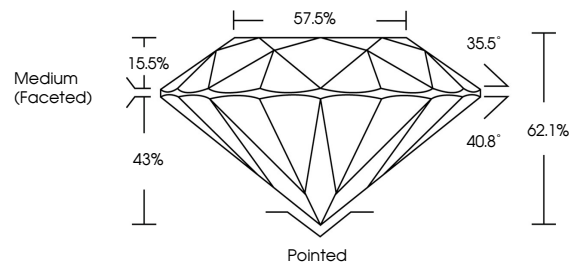
**GRADING RESULTS**

Carat Weight 1.01 CARAT  
Color Grade H  
Clarity Grade VS 1  
Cut Grade EXCELLENT

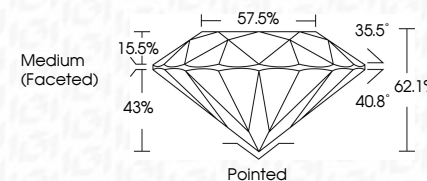
**ADDITIONAL GRADING INFORMATION**

Polish EXCELLENT  
Symmetry EXCELLENT  
Fluorescence SLIGHT  
Inscription(s) IGI 538269815  
Comments: IDEAL CUT ROUND BRILLIANT

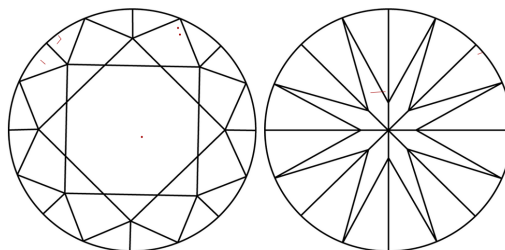
**PROPORTIONS**



Sample Image Used



**CLARITY CHARACTERISTICS**



**KEY TO SYMBOLS**

Red symbols indicate internal characteristics.  
Green symbols indicate external characteristics.

**COLOR**

D - F	G - J	K - M	N - R	S - Z	FANCY
Colorless	Near Colorless	Slightly Tinted	Very Light Color	Light Color	

**CLARITY**

IF	VVS <sup>1-2</sup>	VS <sup>1-2</sup>	SI <sup>1-2</sup>	I <sup>1-3</sup>
Internally Flawless	Very Very Slightly Included	Very Slightly Included	Slightly Included	Included

**ADDITIONAL GRADING INFORMATION**

Polish EXCELLENT  
Symmetry EXCELLENT  
Fluorescence SLIGHT  
Inscription(s) IGI 538269815  
Comments: IDEAL CUT ROUND BRILLIANT



**IGI**

September 14, 2022  
IGI Report No. 538269815  
NATURAL DIAMOND  
ROUND BRILLIANT  
6.39 - 6.42 x 3.98 mm  
Carat Weight 1.01 CARAT  
Color Grade H  
Clarity Grade VS 1  
Cut Grade EXCELLENT  
Depth 62.1%  
Table 57.5%  
Girdle Medium (Faceted)  
Culet Pointed  
Polish EXCELLENT  
Symmetry EXCELLENT  
Fluorescence SLIGHT  
Inscription(s) IGI 538269815  
Comments: IDEAL CUT ROUND BRILLIANT