



**INTERNATIONAL  
GEMOLOGICAL  
INSTITUTE**

**DIAMOND REPORT**

**ELECTRONIC COPY**

January 24, 2023  
IGI Report Number 559260901  
Description NATURAL DIAMOND  
Shape and Cutting Style ROUND BRILLIANT  
Measurements 5.97 - 6.00 x 3.73 mm

**GRADING RESULTS**

Carat Weight 0.82 CARAT  
Color Grade I  
Clarity Grade VS 2  
Cut Grade EXCELLENT

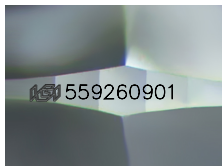
**ADDITIONAL GRADING INFORMATION**

Polish EXCELLENT  
Symmetry EXCELLENT  
Fluorescence VERY SLIGHT

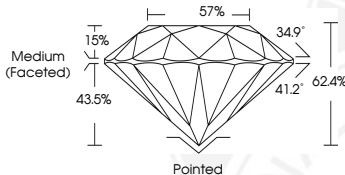
Identification Features CRYSTAL  
Inscription(s) IGI 559260901  
Comments: IDEAL CUT ROUND BRILLIANT



559260901



Sample Image Used



January 24, 2023  
IGI Report Number 559260901  
NATURAL DIAMOND  
ROUND BRILLIANT  
5.97 - 6.00 x 3.73 mm  
Carat Weight 0.82 CARAT  
Color Grade I  
Clarity Grade VS 2  
Cut Grade EXCELLENT  
Polish EXCELLENT  
Symmetry EXCELLENT  
Fluorescence VERY SLIGHT  
Inscription(s) IGI 559260901  
Comments: IDEAL CUT ROUND BRILLIANT



January 24, 2023  
IGI Report Number 559260901  
NATURAL DIAMOND  
ROUND BRILLIANT  
5.97 - 6.00 x 3.73 mm  
Carat Weight 0.82 CARAT  
Color Grade I  
Clarity Grade VS 2  
Cut Grade EXCELLENT  
Polish EXCELLENT  
Symmetry EXCELLENT  
Fluorescence VERY SLIGHT  
Inscription(s) IGI 559260901  
Comments: IDEAL CUT ROUND BRILLIANT

**COLOR**

D - F	G - J	K - M	N - R	S - Z	FANCY
Colorless	Near Colorless	Slightly Tinted	Very Light Color	Light Color	

**CLARITY**

IF	VVS <sup>1-2</sup>	VS <sup>1-2</sup>	SI <sup>1-2</sup>	I <sup>1-2</sup>
Internally Flawless	Very Very Slightly Included	Very Slightly Included	Slightly Included	Included

