



571384667

DIAMOND REPORT **ELECTRONIC COPY**



May 11, 2023
IGI Report Number 571384667
Description NATURAL DIAMOND
Shape and Cutting Style ROUND BRILLIANT
Measurements 7.31 - 7.37 x 4.56 mm

GRADING RESULTS

Carat Weight 1.50 CARAT
Color Grade I
Clarity Grade VS 1
Cut Grade EXCELLENT

May 11, 2023
IGI Report Number 571384667
Description NATURAL DIAMOND
Shape and Cutting Style ROUND BRILLIANT
Measurements 7.31 - 7.37 x 4.56 mm

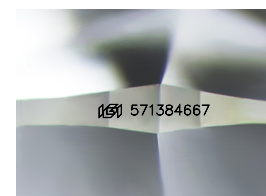
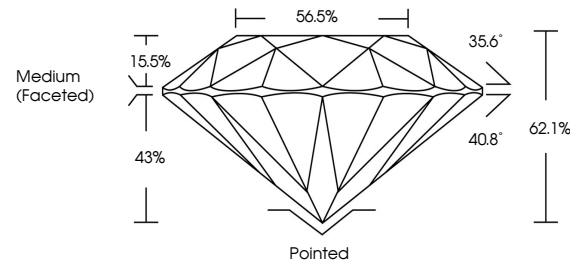
GRADING RESULTS

Carat Weight 1.50 CARAT
Color Grade I
Clarity Grade VS 1
Cut Grade EXCELLENT

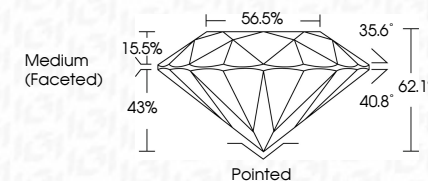
ADDITIONAL GRADING INFORMATION

Polish EXCELLENT
Symmetry EXCELLENT
Fluorescence SLIGHT
Inscription(s) IGI 571384667
Comments: IDEAL CUT ROUND BRILLIANT

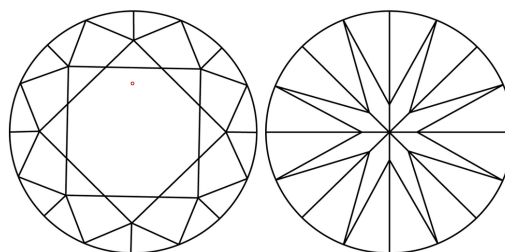
PROPORTIONS



Sample Image Used



CLARITY CHARACTERISTICS



KEY TO SYMBOLS

Red symbols indicate internal characteristics.
Green symbols indicate external characteristics.

COLOR

D - F	G - J	K - M	N - R	S - Z	FANCY
Colorless	Near Colorless	Slightly Tinted	Very Light Color	Light Color	

CLARITY

IF	VS ¹⁻²	VS ¹⁻²	SI ¹⁻²	I ¹⁻³
Internally Flawless	Very Very Slightly Included	Very Slightly Included	Slightly Included	Included

ADDITIONAL GRADING INFORMATION

Polish EXCELLENT
Symmetry EXCELLENT
Fluorescence SLIGHT
Inscription(s) IGI 571384667
Comments: IDEAL CUT ROUND BRILLIANT



IGI



May 11, 2023
IGI Report No 571384667
NATURAL DIAMOND
ROUND BRILLIANT
7.31 - 7.37 x 4.56 mm
Carat Weight 1.50 CARAT
Color Grade I
Clarity Grade VS 1
Cut Grade EXCELLENT
Depth 62.1%
Table 56.5%
Girdle Medium (Faceted)
Culet Pointed
Polish EXCELLENT
Symmetry EXCELLENT
Fluorescence SLIGHT
Inscription(s) IGI 571384667
Comments: IDEAL CUT ROUND BRILLIANT