



ELECTRONIC COPY

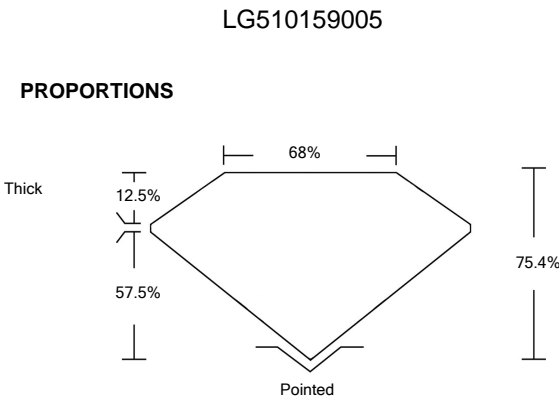
LABORATORY GROWN DIAMOND REPORT

LABORATORY GROWN DIAMOND REPORT

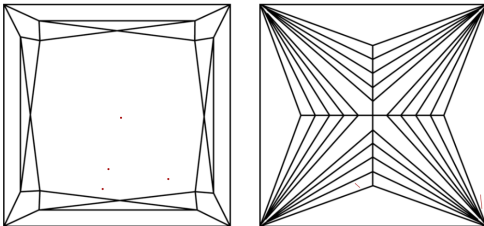
December 28, 2021	
IGI Report Number	LG510159005
Description	LABORATORY GROWN DIAMOND
Shape and Cutting Style	PRINCESS CUT
Measurements	7.16 X 7.06 X 5.32 MM
GRADING RESULTS	
Carat Weight	2.45 CARATS
Color Grade	H
Clarity Grade	VVS 2

ADDITIONAL GRADING INFORMATION	
Polish	EXCELLENT
Symmetry	EXCELLENT
Fluorescence	NONE
Inscription(s)	LABGROWN IGI LG150159005

Comments: This Laboratory Grown Diamond was created by Chemical Vapor Deposition (CVD) growth process and may include post-growth treatment.
Type IIa



CLARITY CHARACTERISTICS



KEY TO SYMBOLS

Red symbols indicate internal characteristics.
Green symbols indicate external characteristics.

GRADING SCALES

COLOR GRADING SCALE	CL		NC	FT	VLT	LT
	COLORLESS D-F		NEAR COLORLESS G-J	FAINT K-M	VERY LIGHT N-R	LIGHT S-Z
CLARITY (10x) GRADING SCALE	FL	IF	VVS	VS	SI	I
	FLAWLESS INTERIALLY FLAWLESS		VERY VERY SLIGHTLY INCLUDED	VERY SLIGHTLY INCLUDED	SLIGHTLY INCLUDED	INCLUDED

The laboratory grown diamond described in this Report (Report) has been graded, tested, analyzed, examined and/or inscribed by International Gemological Institute (IGI). A laboratory grown diamond is one that has essentially the same chemical, physical and optical properties as a natural diamond. IGI is a company owned and operated by a man (a manufactured product). IGI employs and utilizes those techniques and equipment currently available to IGI, including, without limitation, 10X magnification, corrected triple beam, binocular microscope, color color comparison stones, non-destructive testing, and other laboratory grown diamond testing equipment. IGI does not use such instruments and/or processes as deemed appropriate by IGI. This Report includes advanced security features. A duly accredited gemologist or jeweler can advise you with relevance the importance of and interrelationship between cut, color, clarity and carat weight.

THIS REPORT IS NEITHER A GUARANTEE, VALUATION, NOR APPRAISAL OF THE GEMSTONE DESCRIBED HEREIN. PLEASE REVIEW THE LIMITATIONS AND RESTRICTIONS SET FORTH ONLINE FOR THIS REPORT. PLEASE VISIT WWW.IGI.ORG FOR THE LIMITATIONS AND DISCLAIMERS. PLEASE GO TO WWW.IGI.ORG OR CALL 1-888-BUY-IGI.



PHOTO ENLARGED

LABGROWN | G | LG510159005

LASERSCRIBESM

© IGI 2020, International Gemological Institute

FD - 10 20

www.igi.org



IGI

December 28, 2021	IGI Report No. LGS10159005	PRINCESS CUT 7.18 X 7.08 X 5.32 MM 2.45 CARATS H VVS 2 75.4% 68% Thick		Polished EXCELLENT EXCELLENT NONE LARGE GROWN IGI LCG10159005	Cut Polish Symmetry Fluorescence Inscriptions Comments:	This Laboratory Grown Diamond was created by Chemical Vapor Deposition (CVD) growth process and may include post-growth treatments. Type Ila
-------------------	----------------------------	---	--	--	--	---

This Laboratory Grown Diamond was created by Chemical Vapor Deposition (CVD) growth process and may include post-growth treatment.
Type IIa