



622481492

**DIAMOND REPORT** **ELECTRONIC COPY**



March 20, 2024  
IGI Report Number 622481492  
Description NATURAL DIAMOND  
Shape and Cutting Style ROUND BRILLIANT  
Measurements 5.36 - 5.40 x 3.37 mm

**GRADING RESULTS**

Carat Weight 0.60 CARAT  
Color Grade D  
Clarity Grade INTERNALLY FLAWLESS  
Cut Grade EXCELLENT

March 20, 2024  
IGI Report Number 622481492  
Description NATURAL DIAMOND  
Shape and Cutting Style ROUND BRILLIANT  
Measurements 5.36 - 5.40 x 3.37 mm

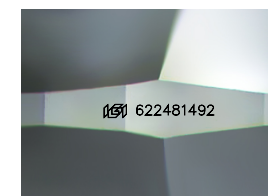
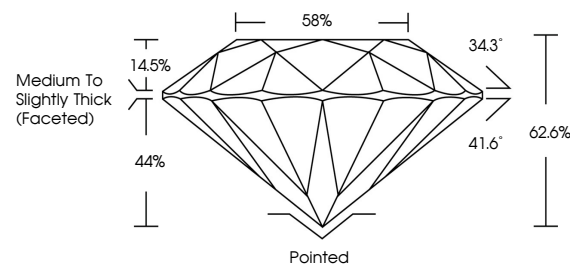
**GRADING RESULTS**

Carat Weight 0.60 CARAT  
Color Grade D  
Clarity Grade INTERNALLY FLAWLESS  
Cut Grade EXCELLENT

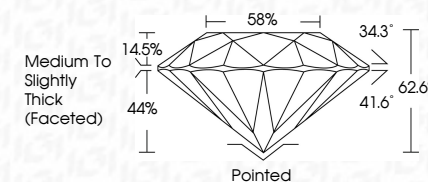
**ADDITIONAL GRADING INFORMATION**

Polish EXCELLENT  
Symmetry EXCELLENT  
Fluorescence SLIGHT  
Inscription(s) 622481492

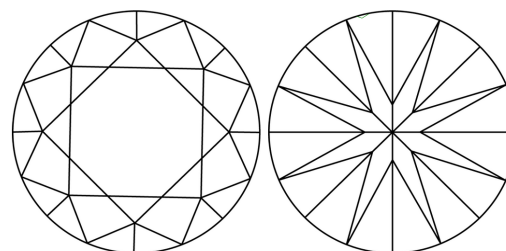
**PROPORTIONS**



Sample Image Used



**CLARITY CHARACTERISTICS**



**COLOR**

D - F	G - J	K - M	N - R	S - Z	FANCY
Colorless	Near Colorless	Slightly Tinted	Very Light Color	Light Color	

**CLARITY**

IF	VVS <sup>1-2</sup>	VS <sup>1-2</sup>	SI <sup>1-2</sup>	I <sup>1-3</sup>
Internally Flawless	Very Very Slightly Included	Very Slightly Included	Slightly Included	Included

**ADDITIONAL GRADING INFORMATION**

Polish EXCELLENT  
Symmetry EXCELLENT  
Fluorescence SLIGHT  
Inscription(s) 622481492

**KEY TO SYMBOLS**

Red symbols indicate internal characteristics.  
Green symbols indicate external characteristics.



**IGI**

March 20, 2024  
IGI Report No 622481492  
NATURAL DIAMOND  
ROUND BRILLIANT  
5.36 - 5.40 x 3.37 mm  
Carat Weight 0.60 CARAT  
Color Grade D  
Clarity Grade EXCELLENT  
Depth 62.6%  
Table Medium To Slightly Thick (Faceted)  
58%  
Cut Pointed  
Polish EXCELLENT  
Symmetry EXCELLENT  
Fluorescence SLIGHT  
Inscription(s) 622481492