



**INTERNATIONAL
GEMOLOGICAL
INSTITUTE**

625414846



April 10, 2024
IGI Report Number 625414846
NATURAL DIAMOND
ROUND BRILLIANT

5.14 - 5.19 x 3.21 mm
Carat Weight 0.53 CARAT
Color Grade D
Clarity Grade VS 2
Cut Grade EXCELLENT
Polish EXCELLENT
Symmetry EXCELLENT
Fluorescence NONE
Inscription(s) IGI 625414846
Comments: IDEAL CUT ROUND
BRILLIANT



April 10, 2024
IGI Report Number 625414846
NATURAL DIAMOND
ROUND BRILLIANT

5.14 - 5.19 x 3.21 mm
Carat Weight 0.53 CARAT
Color Grade D
Clarity Grade VS 2
Cut Grade EXCELLENT
Polish EXCELLENT
Symmetry EXCELLENT
Fluorescence NONE
Inscription(s) IGI 625414846
Comments: IDEAL CUT ROUND
BRILLIANT

DIAMOND REPORT

ELECTRONIC COPY

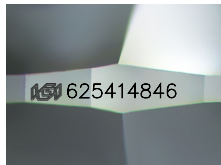
April 10, 2024
IGI Report Number 625414846
Description NATURAL DIAMOND
Shape and Cutting Style ROUND BRILLIANT
Measurements 5.14 - 5.19 x 3.21 mm

GRADING RESULTS

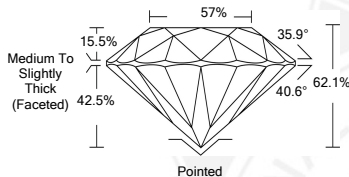
Carat Weight 0.53 CARAT
Color Grade D
Clarity Grade VS 2
Cut Grade EXCELLENT

ADDITIONAL GRADING INFORMATION

Polish EXCELLENT
Symmetry EXCELLENT
Fluorescence NONE
Identification Features CRYSTAL
Inscription(s) IGI 625414846
Comments: IDEAL CUT ROUND BRILLIANT



Sample Image Used



COLOR

D - F	G - J	K - M	N - R	S - Z	FANCY
Colorless	Near Colorless	Slightly Tinted	Very Light Color	Light Color	

CLARITY

IF	VVS ¹⁻²	VS ¹⁻²	SI ¹⁻²	I ¹⁻²
Internally Flawless	Very Very Slightly Included	Very Slightly Included	Slightly Included	Included

© IGI 2020, International Gemological Institute

FD - 10 20

THIS DOCUMENT WAS PRODUCED WITH THE FOLLOWING SECURITY MEASURES: SPECIAL DOCUMENT PAPER, INK SCREENS, WATERMARK BACKGROUND DESIGNS, HOLOGRAM AND OTHER SECURITY FEATURES NOT LISTED AND DO EXCEED DOCUMENT SECURITY INDUSTRY GUIDELINES.