



**INTERNATIONAL  
GEMOLOGICAL  
INSTITUTE**

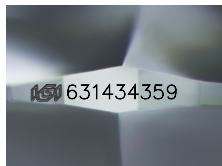
631434359



June 4, 2024  
IGI Report Number 631434359  
NATURAL DIAMOND  
ROUND BRILLIANT  
5.23 - 5.29 x 3.25 mm  
Carat Weight 0.56 CARAT  
Color Grade F  
Clarity Grade VS 2  
Cut Grade EXCELLENT  
Polish EXCELLENT  
Symmetry EXCELLENT  
Fluorescence NONE  
Inscription(s) IGI 631434359

**DIAMOND REPORT**

**ELECTRONIC COPY**



Sample Image Used

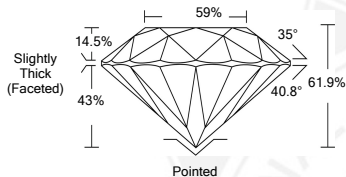
June 4, 2024  
IGI Report Number 631434359  
Description NATURAL DIAMOND  
Shape and Cutting Style ROUND BRILLIANT  
Measurements 5.23 - 5.29 x 3.25 mm

**GRADING RESULTS**

Carat Weight 0.56 CARAT  
Color Grade F  
Clarity Grade VS 2  
Cut Grade EXCELLENT

**ADDITIONAL GRADING INFORMATION**

Polish EXCELLENT  
Symmetry EXCELLENT  
Fluorescence NONE  
Identification Features CLOUD, CRYSTAL  
Inscription(s) IGI 631434359



**COLOR**

D - F	G - J	K - M	N - R	S - Z	FANCY
Colorless	Near Colorless	Slightly Tinted	Very Light Color	Light Color	

**CLARITY**

IF	VVS <sup>1-2</sup>	VS <sup>1-2</sup>	SI <sup>1-2</sup>	I <sup>1-2</sup>
Internally Flawless	Very Very Slightly Included	Very Slightly Included	Slightly Included	Included



June 4, 2024  
IGI Report Number 631434359  
NATURAL DIAMOND  
ROUND BRILLIANT  
5.23 - 5.29 x 3.25 mm  
Carat Weight 0.56 CARAT  
Color Grade F  
Clarity Grade VS 2  
Cut Grade EXCELLENT  
Polish EXCELLENT  
Symmetry EXCELLENT  
Fluorescence NONE  
Inscription(s) IGI 631434359



© IGI 2020, International Gemological Institute

FD - 10 20

THIS DOCUMENT WAS PRODUCED WITH THE FOLLOWING SECURITY MEASURES: SPECIAL DOCUMENT PAPER, INK SCREENS, WATERMARK BACKGROUND DESIGNS, HOLOGRAM AND OTHER SECURITY FEATURES NOT LISTED AND DO EXCEED DOCUMENT SECURITY INDUSTRY GUIDELINES.