



**INTERNATIONAL  
GEMOLOGICAL  
INSTITUTE**

**ELECTRONIC COPY**

**633472319**



September 3, 2024

IGI Report Number 633472319

ROUND BRILLIANT  
NATURAL DIAMOND

5.72 - 5.78 X 3.40 MM

Carat Weight	<b>0.70 CARAT</b>
Color Grade	<b>G</b>
Clarity Grade	<b>VS 1</b>
Cut Grade	<b>EXCELLENT</b>
Polish	<b>EXCELLENT</b>
Symmetry	<b>EXCELLENT</b>
Fluorescence	<b>VERY SLIGHT</b>
Inscription(s)	<b>IGI 633472319</b>

**DIAMOND REPORT**

September 3, 2024

IGI Report Number

**633472319**

Description

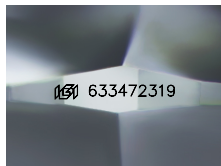
**NATURAL DIAMOND**

Shape and Cutting Style

**ROUND BRILLIANT**

Measurements

**5.72 - 5.78 X 3.40 MM**



Sample Image Used

**GRADING RESULTS**

Carat Weight

**0.70 CARAT**

Color Grade

**G**

Clarity Grade

**VS 1**

Cut Grade

**EXCELLENT**

**ADDITIONAL GRADING INFORMATION**

Polish

**EXCELLENT**

Symmetry

**EXCELLENT**

Fluorescence

**VERY SLIGHT**

Identification Features

**CRYSTAL, INDENTED NATURAL**

Inscription(s)

**IGI 633472319**



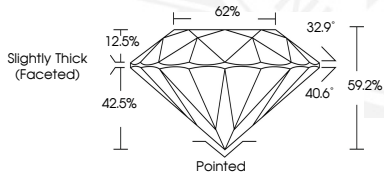
September 3, 2024

IGI Report Number 633472319

ROUND BRILLIANT  
NATURAL DIAMOND

5.72 - 5.78 X 3.40 MM

Carat Weight	<b>0.70 CARAT</b>
Color Grade	<b>G</b>
Clarity Grade	<b>VS 1</b>
Cut Grade	<b>EXCELLENT</b>
Polish	<b>EXCELLENT</b>
Symmetry	<b>EXCELLENT</b>
Fluorescence	<b>VERY SLIGHT</b>
Inscription(s)	<b>IGI 633472319</b>



THIS DOCUMENT WAS PRODUCED WITH THE FOLLOWING SECURITY MEASURES: SPECIAL DOCUMENT PAPER, INK SCREENS, WATERMARK, BACKGROUND DESIGN, HOLOGRAM AND OTHER SECURITY FEATURES NOT LISTED AND DO EXCEED DOCUMENT SECURITY INDUSTRY GUIDELINES.

For terms & conditions and to verify this report, please visit [www.igi.org](http://www.igi.org)