



**INTERNATIONAL  
GEMOLOGICAL  
INSTITUTE**

**DIAMOND REPORT**

September 18, 2024

IGI Report Number

**633472746**

Description

**NATURAL DIAMOND**

Shape and Cutting Style

**ROUND BRILLIANT**

Measurements

**6.23 - 6.26 X 3.76 MM**

**GRADING RESULTS**

Carat Weight

**0.90 CARAT**

Color Grade

**G**

Clarity Grade

**VS 2**

Cut Grade

**EXCELLENT**

**ADDITIONAL GRADING INFORMATION**

Polish

**EXCELLENT**

Symmetry

**EXCELLENT**

Fluorescence

**VERY SLIGHT**

Identification Features

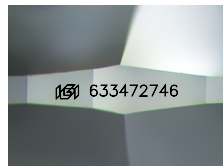
**CLOUD, FEATHER**

Inscription(s)

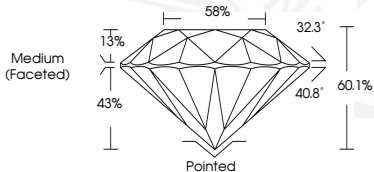
**IGI 633472746**

**ELECTRONIC COPY**

**633472746**



Sample Image Used



September 18, 2024

IGI Report Number **633472746**

**ROUND BRILLIANT**

**NATURAL DIAMOND**

**6.23 - 6.26 X 3.76 MM**

Carat Weight **0.90 CARAT**

Color Grade **G**

Clarity Grade **VS 2**

Cut Grade **EXCELLENT**

Polish **EXCELLENT**

Symmetry **EXCELLENT**

Fluorescence **VERY SLIGHT**

Inscription(s) **IGI 633472746**



September 18, 2024

IGI Report Number **633472746**

**ROUND BRILLIANT**

**NATURAL DIAMOND**

**6.23 - 6.26 X 3.76 MM**

Carat Weight **0.90 CARAT**

Color Grade **G**

Clarity Grade **VS 2**

Cut Grade **EXCELLENT**

Polish **EXCELLENT**

Symmetry **EXCELLENT**

Fluorescence **VERY SLIGHT**

Inscription(s) **IGI 633472746**



THIS DOCUMENT WAS PRODUCED WITH THE FOLLOWING SECURITY MEASURES: SPECIAL DOCUMENT PAPER, INK SCREENS, WATERMARK, BACKGROUND DESIGN, HOLOGRAM AND OTHER SECURITY FEATURES NOT LISTED AND DO EXCEED DOCUMENT SECURITY INDUSTRY GUIDELINES.

For terms & conditions and to verify this report, please visit [www.igi.org](http://www.igi.org)