



**INTERNATIONAL  
GEMOLOGICAL  
INSTITUTE**

**ELECTRONIC COPY**

**648402451**



September 9, 2024

IGI Report Number 648402451

ROUND BRILLIANT  
NATURAL DIAMOND

5.21 - 5.24 X 3.27 MM

Carat Weight	<b>0.55 CARAT</b>
Color Grade	<b>G</b>
Clarity Grade	<b>VS 2</b>
Cut Grade	<b>EXCELLENT</b>
Polish	<b>EXCELLENT</b>
Symmetry	<b>EXCELLENT</b>
Fluorescence	<b>NONE</b>
Inscription(s)	<b>IGI 648402451</b>

**DIAMOND REPORT**

September 9, 2024

IGI Report Number

**648402451**

Description

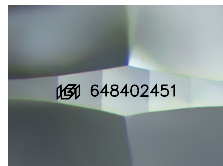
**NATURAL DIAMOND**

Shape and Cutting Style

**ROUND BRILLIANT**

Measurements

**5.21 - 5.24 X 3.27 MM**



Sample Image Used

**GRADING RESULTS**

Carat Weight

**0.55 CARAT**

Color Grade

**G**

Clarity Grade

**VS 2**

Cut Grade

**EXCELLENT**

**ADDITIONAL GRADING INFORMATION**

Polish

**EXCELLENT**

Symmetry

**EXCELLENT**

Fluorescence

**NONE**

Identification Features

**FEATHER, CRYSTAL CLOUD**

Inscription(s)

**IGI 648402451**



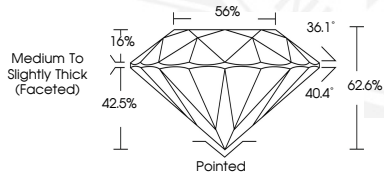
September 9, 2024

IGI Report Number 648402451

ROUND BRILLIANT  
NATURAL DIAMOND

5.21 - 5.24 X 3.27 MM

Carat Weight	<b>0.55 CARAT</b>
Color Grade	<b>G</b>
Clarity Grade	<b>VS 2</b>
Cut Grade	<b>EXCELLENT</b>
Polish	<b>EXCELLENT</b>
Symmetry	<b>EXCELLENT</b>
Fluorescence	<b>NONE</b>
Inscription(s)	<b>IGI 648402451</b>



THIS DOCUMENT WAS PRODUCED WITH THE FOLLOWING SECURITY MEASURES: SPECIAL DOCUMENT PAPER, INK SCREENS, WATERMARK, BACKGROUND DESIGNS, HOLOGRAM AND OTHER SECURITY FEATURES NOT LISTED AND DO EXCEED DOCUMENT SECURITY INDUSTRY GUIDELINES.

For terms & conditions and to verify this report, please visit [www.igi.org](http://www.igi.org)