



**INTERNATIONAL  
GEMOLOGICAL  
INSTITUTE**

**DIAMOND REPORT**

September 13, 2024  
 IGI Report Number **648402750**  
 Description **NATURAL DIAMOND**  
 Shape and Cutting Style **ROUND BRILLIANT**  
 Measurements **5.14 - 5.17 X 3.18 MM**

**GRADING RESULTS**

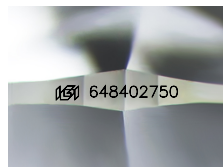
Carat Weight **0.52 CARAT**  
 Color Grade **E**  
 Clarity Grade **VS 1**  
 Cut Grade **EXCELLENT**

**ADDITIONAL GRADING INFORMATION**

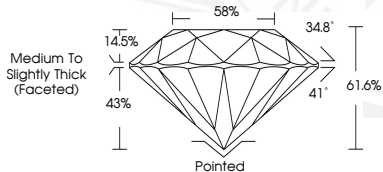
Polish **EXCELLENT**  
 Symmetry **EXCELLENT**  
 Fluorescence **VERY SLIGHT**  
 Identification Features **FEATHER**  
 Inscription(s) **(IGI) 648402750**  
 Comments: IDEAL CUT ROUND BRILLIANT

**ELECTRONIC COPY**

**648402750**



Sample Image Used



September 13, 2024  
 IGI Report Number **648402750**  
 ROUND BRILLIANT  
 NATURAL DIAMOND  
 5.14 - 5.17 X 3.18 MM  
 Carat Weight **0.52 CARAT**  
 Color Grade **E**  
 Clarity Grade **VS 1**  
 Cut Grade **EXCELLENT**  
 Polish **EXCELLENT**  
 Symmetry **EXCELLENT**  
 Fluorescence **VERY SLIGHT**  
 Inscription(s) **(IGI) 648402750**  
 Comments: IDEAL CUT ROUND BRILLIANT



September 13, 2024  
 IGI Report Number **648402750**  
 ROUND BRILLIANT  
 NATURAL DIAMOND  
 5.14 - 5.17 X 3.18 MM  
 Carat Weight **0.52 CARAT**  
 Color Grade **E**  
 Clarity Grade **VS 1**  
 Cut Grade **EXCELLENT**  
 Polish **EXCELLENT**  
 Symmetry **EXCELLENT**  
 Fluorescence **VERY SLIGHT**  
 Inscription(s) **(IGI) 648402750**  
 Comments: IDEAL CUT ROUND BRILLIANT

THIS DOCUMENT WAS PRODUCED WITH THE FOLLOWING SECURITY MEASURES: SPECIAL DOCUMENT PAPER, INK SCREENS, WATERMARK, BACKGROUND DESIGN, HOLOGRAM AND OTHER SECURITY FEATURES NOT LISTED AND DO EXCEED DOCUMENT SECURITY INDUSTRY GUIDELINES.

For terms & conditions and to verify this report, please visit [www.igi.org](http://www.igi.org)