



**INTERNATIONAL
GEMOLOGICAL
INSTITUTE**

ELECTRONIC COPY

648403231



September 23, 2024

IGI Report Number 648403231

**ROUND BRILLIANT
NATURAL DIAMOND**

5.81 - 5.88 X 3.68 MM

Carat Weight	0.77 CARAT
Color Grade	E
Clarity Grade	VS 2
Cut Grade	EXCELLENT
Polish	EXCELLENT
Symmetry	EXCELLENT
Fluorescence	VERY SLIGHT
Inscription(s)	IGI 648403231

DIAMOND REPORT

September 23, 2024

IGI Report Number

648403231

Description

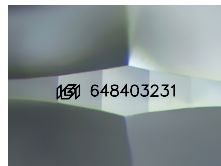
NATURAL DIAMOND

Shape and Cutting Style

ROUND BRILLIANT

Measurements

5.81 - 5.88 X 3.68 MM



Sample Image Used

GRADING RESULTS

Carat Weight **0.77 CARAT**

Color Grade **E**

Clarity Grade **VS 2**

Cut Grade **EXCELLENT**

ADDITIONAL GRADING INFORMATION

Polish **EXCELLENT**

Symmetry **EXCELLENT**

Fluorescence **VERY SLIGHT**

Identification Features **CRYSTAL CLOUD**

Inscription(s) **IGI 648403231**



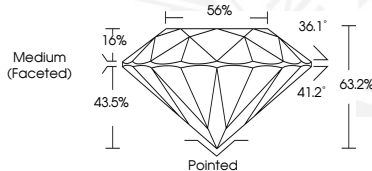
September 23, 2024

IGI Report Number 648403231

**ROUND BRILLIANT
NATURAL DIAMOND**

5.81 - 5.88 X 3.68 MM

Carat Weight	0.77 CARAT
Color Grade	E
Clarity Grade	VS 2
Cut Grade	EXCELLENT
Polish	EXCELLENT
Symmetry	EXCELLENT
Fluorescence	VERY SLIGHT
Inscription(s)	IGI 648403231



THIS DOCUMENT WAS PRODUCED WITH THE FOLLOWING SECURITY MEASURES: SPECIAL DOCUMENT PAPER, INK SCREENS, WATERMARK, BACKGROUND DESIGNS, HOLOGRAM AND OTHER SECURITY FEATURES NOT LISTED AND DO EXCEED DOCUMENT SECURITY INDUSTRY GUIDELINES.

For terms & conditions and to verify this report, please visit www.igi.org