



# INTERNATIONAL GEMOLOGICAL INSTITUTE

ELECTRONIC COPY

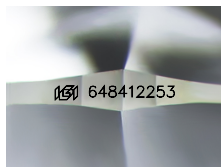
648412253



August 23, 2024  
 IGI Report Number 648412253  
 ROUND BRILLIANT  
 NATURAL DIAMOND  
 6.25 - 6.28 X 3.79 MM  
 Carat Weight 0.92 CARAT  
 Color Grade D  
 Clarity Grade VS 2  
 Cut Grade EXCELLENT  
 Polish EXCELLENT  
 Symmetry EXCELLENT  
 Fluorescence VERY SLIGHT  
 Inscription(s) IGI 648412253  
 Comments: IDEAL CUT ROUND BRILLIANT

## DIAMOND REPORT

August 23, 2024  
 IGI Report Number 648412253  
 Description NATURAL DIAMOND  
 Shape and Cutting Style ROUND BRILLIANT  
 Measurements 6.25 - 6.28 X 3.79 MM



Sample Image Used

## GRADING RESULTS

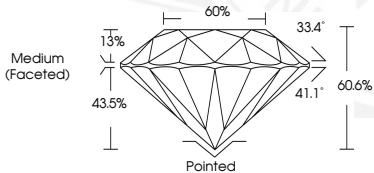
Carat Weight 0.92 CARAT  
 Color Grade D  
 Clarity Grade VS 2  
 Cut Grade EXCELLENT

## ADDITIONAL GRADING INFORMATION

Polish EXCELLENT  
 Symmetry EXCELLENT  
 Fluorescence VERY SLIGHT  
 Identification Features CRYSTAL CLOUD, FEATHER  
 Inscription(s) IGI 648412253  
 Comments: IDEAL CUT ROUND BRILLIANT



August 23, 2024  
 IGI Report Number 648412253  
 ROUND BRILLIANT  
 NATURAL DIAMOND  
 6.25 - 6.28 X 3.79 MM  
 Carat Weight 0.92 CARAT  
 Color Grade D  
 Clarity Grade VS 2  
 Cut Grade EXCELLENT  
 Polish EXCELLENT  
 Symmetry EXCELLENT  
 Fluorescence VERY SLIGHT  
 Inscription(s) IGI 648412253  
 Comments: IDEAL CUT ROUND BRILLIANT



THIS DOCUMENT WAS PRODUCED WITH THE FOLLOWING SECURITY MEASURES: SPECIAL DOCUMENT PAPER, INK SCREENS, WATERMARK, BACKGROUND DESIGN, HOLOGRAM AND OTHER SECURITY FEATURES NOT LISTED AND DO EXCEED DOCUMENT SECURITY INDUSTRY GUIDELINES.

For terms & conditions and to verify this report, please visit [www.igi.org](http://www.igi.org)