



**INTERNATIONAL
GEMOLOGICAL
INSTITUTE**

DIAMOND REPORT

August 23, 2024
 IGI Report Number **648412314**
 Description **NATURAL DIAMOND**
 Shape and Cutting Style **ROUND BRILLIANT**
 Measurements **5.68 - 5.70 X 3.51 MM**

GRADING RESULTS

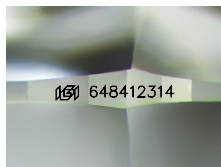
Carat Weight **0.71 CARAT**
 Color Grade **E**
 Clarity Grade **VS 1**
 Cut Grade **EXCELLENT**

ADDITIONAL GRADING INFORMATION

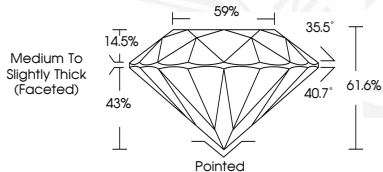
Polish **EXCELLENT**
 Symmetry **EXCELLENT**
 Fluorescence **VERY SLIGHT**
 Identification Features **CLOUD, NEEDLE**
 Inscription(s) **(GSI) 648412314**
 Comments: IDEAL CUT ROUND BRILLIANT

ELECTRONIC COPY

648412314



Sample Image Used



August 23, 2024
 IGI Report Number **648412314**
 ROUND BRILLIANT
 NATURAL DIAMOND
 5.68 - 5.70 X 3.51 MM
 Carat Weight **0.71 CARAT**
 Color Grade **E**
 Clarity Grade **VS 1**
 Cut Grade **EXCELLENT**
 Polish **EXCELLENT**
 Symmetry **EXCELLENT**
 Fluorescence **VERY SLIGHT**
 Inscription(s) **(GSI) 648412314**
 Comments: IDEAL CUT ROUND BRILLIANT



August 23, 2024
 IGI Report Number **648412314**
 ROUND BRILLIANT
 NATURAL DIAMOND
 5.68 - 5.70 X 3.51 MM
 Carat Weight **0.71 CARAT**
 Color Grade **E**
 Clarity Grade **VS 1**
 Cut Grade **EXCELLENT**
 Polish **EXCELLENT**
 Symmetry **EXCELLENT**
 Fluorescence **VERY SLIGHT**
 Inscription(s) **(GSI) 648412314**
 Comments: IDEAL CUT ROUND BRILLIANT

THIS DOCUMENT WAS PRODUCED WITH THE FOLLOWING SECURITY MEASURES: SPECIAL DOCUMENT PAPER, INK SCREENS, WATERMARK, BACKGROUND DESIGN, HOLOGRAM AND OTHER SECURITY FEATURES NOT LISTED AND DO EXCEED DOCUMENT SECURITY INDUSTRY GUIDELINES.

For terms & conditions and to verify this report, please visit www.igi.org