



**INTERNATIONAL
GEMOLOGICAL
INSTITUTE**

ELECTRONIC COPY

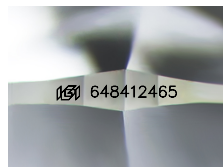
648412465



August 26, 2024
IGI Report Number 648412465
ROUND BRILLIANT
NATURAL DIAMOND
5.95 - 6.01 X 3.73 MM
Carat Weight 0.82 CARAT
Color Grade E
Clarity Grade VS 1
Cut Grade EXCELLENT
Polish EXCELLENT
Symmetry EXCELLENT
Fluorescence VERY SLIGHT
Inscription(s) (G) 648412465

DIAMOND REPORT

August 26, 2024
IGI Report Number 648412465
Description NATURAL DIAMOND
Shape and Cutting Style ROUND BRILLIANT
Measurements 5.95 - 6.01 X 3.73 MM



Sample Image Used

GRADING RESULTS

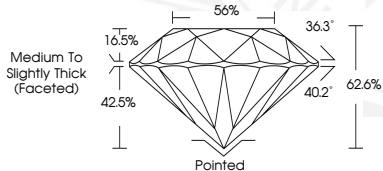
Carat Weight 0.82 CARAT
Color Grade E
Clarity Grade VS 1
Cut Grade EXCELLENT

ADDITIONAL GRADING INFORMATION

Polish EXCELLENT
Symmetry EXCELLENT
Fluorescence VERY SLIGHT
Identification Features FEATHER, CRYSTAL
Inscription(s) (G) 648412465



August 26, 2024
IGI Report Number 648412465
ROUND BRILLIANT
NATURAL DIAMOND
5.95 - 6.01 X 3.73 MM
Carat Weight 0.82 CARAT
Color Grade E
Clarity Grade VS 1
Cut Grade EXCELLENT
Polish EXCELLENT
Symmetry EXCELLENT
Fluorescence VERY SLIGHT
Inscription(s) (G) 648412465



THIS DOCUMENT WAS PRODUCED WITH THE FOLLOWING SECURITY MEASURES: SPECIAL DOCUMENT PAPER, INK SCREENS, WATERMARK, BACKGROUND DESIGNS, HOLOGRAM AND OTHER SECURITY FEATURES NOT LISTED AND DO EXCEED DOCUMENT SECURITY INDUSTRY GUIDELINES.

For terms & conditions and to verify this report, please visit www.igi.org