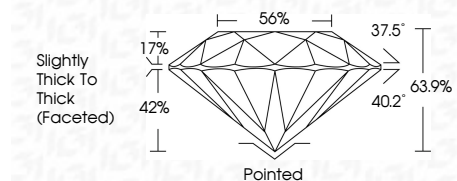




November 12, 2024
IGI Report Number **653423171**
Description **NATURAL DIAMOND**
Shape and Cutting Style **ROUND BRILLIANT**
Measurements **6.36 - 6.39 X 4.07 MM**

GRADING RESULTS

Carat Weight **1.06 CARAT**
Color Grade **F**
Clarity Grade **SI 2**
Cut Grade **VERY GOOD**



ADDITIONAL GRADING INFORMATION

Polish **EXCELLENT**
Symmetry **EXCELLENT**
Fluorescence **VERY SLIGHT**
Inscription(s) **IGI 653423171**



IGI

November 12, 2024
IGI Report No 653423171
ROUND BRILLIANT
6.36 - 6.39 X 4.07 MM
1.06 CARAT
F
SI 2
VERY GOOD
63.9%
56%
Slightly Thick To Thick (Faceted)
Pointed
EXCELLENT
EXCELLENT
VERY SLIGHT
IGI 653423171

Cutler
Polish
Symmetry
Fluorescence
Inscription(s)

ELECTRONIC COPY

DIAMOND REPORT

November 12, 2024
IGI Report Number **653423171**
Description **NATURAL DIAMOND**
Shape and Cutting Style **ROUND BRILLIANT**
Measurements **6.36 - 6.39 X 4.07 MM**

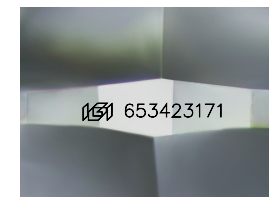
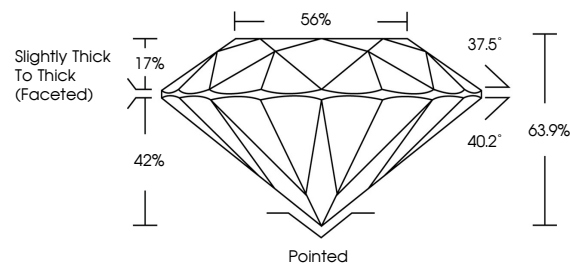
GRADING RESULTS

Carat Weight **1.06 CARAT**
Color Grade **F**
Clarity Grade **SI 2**
Cut Grade **VERY GOOD**

ADDITIONAL GRADING INFORMATION

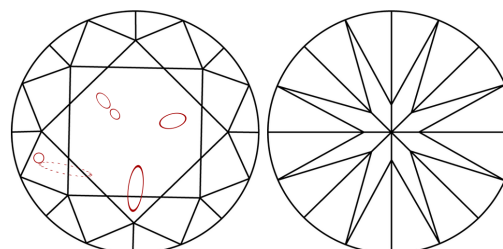
Polish **EXCELLENT**
Symmetry **EXCELLENT**
Fluorescence **VERY SLIGHT**
Inscription(s) **IGI 653423171**

PROPORTIONS



Sample Image Used

CLARITY CHARACTERISTICS



KEY TO SYMBOLS

Red symbols indicate internal characteristics.
Green symbols indicate external characteristics.

COLOR

D - F	G - J	K - M	N - R	S - Z	FANCY
Colorless	Near Colorless	Slightly Tinted	Very Light Color	Light Color	

CLARITY

IF	VVS ¹⁻²	VS ¹⁻²	SI ¹⁻²	I ¹⁻³
Internally Flawless	Very Very Slightly Included	Very Slightly Included	Slightly Included	Included

