



653423541

**DIAMOND REPORT** **ELECTRONIC COPY**



November 20, 2024

IGI Report Number 653423541  
Description NATURAL DIAMOND  
Shape and Cutting Style ROUND BRILLIANT  
Measurements 6.78 - 6.83 x 4.25 mm

**GRADING RESULTS**

Carat Weight 1.22 CARAT  
Color Grade E  
Clarity Grade VS 2  
Cut Grade EXCELLENT

November 20, 2024  
IGI Report Number 653423541  
Description NATURAL DIAMOND  
Shape and Cutting Style ROUND BRILLIANT  
Measurements 6.78 - 6.83 x 4.25 mm

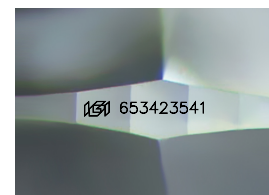
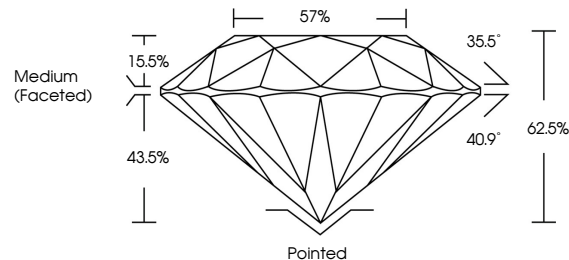
**GRADING RESULTS**

Carat Weight 1.22 CARAT  
Color Grade E  
Clarity Grade VS 2  
Cut Grade EXCELLENT

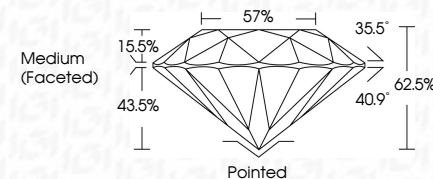
**ADDITIONAL GRADING INFORMATION**

Polish EXCELLENT  
Symmetry EXCELLENT  
Fluorescence SLIGHT  
Inscription(s) IGI 653423541  
Comments: IDEAL CUT ROUND BRILLIANT

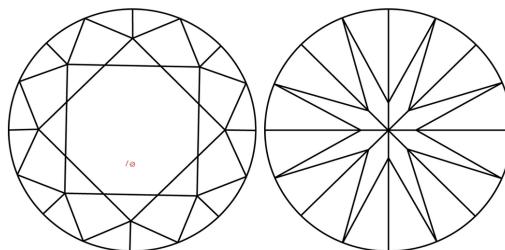
**PROPORTIONS**



Sample Image Used



**CLARITY CHARACTERISTICS**



**COLOR**

D - F	G - J	K - M	N - R	S - Z	FANCY
Colorless	Near Colorless	Slightly Tinted	Very Light Color	Light Color	

**CLARITY**

IF	VVS <sup>1-2</sup>	VS <sup>1-2</sup>	SI <sup>1-2</sup>	I <sup>1-3</sup>
Internally Flawless	Very Very Slightly Included	Very Slightly Included	Slightly Included	Included

**ADDITIONAL GRADING INFORMATION**

Polish EXCELLENT  
Symmetry EXCELLENT  
Fluorescence SLIGHT  
Inscription(s) IGI 653423541  
Comments: IDEAL CUT ROUND BRILLIANT

**KEY TO SYMBOLS**

Red symbols indicate internal characteristics.  
Green symbols indicate external characteristics.



**IGI**

November 20, 2024  
IGI Report No. 653423541  
NATURAL DIAMOND  
ROUND BRILLIANT  
6.78 - 6.83 x 4.25 mm  
Carat Weight 1.22 CARAT  
Color Grade E  
Clarity Grade VS2  
Cut Grade EXCELLENT  
Depth 62.5%  
Table 57%  
Grade Medium (Faceted)  
Culet Pointed  
Polish EXCELLENT  
Symmetry EXCELLENT  
Fluorescence SLIGHT  
Inscription(s) IGI 653423541  
Comments: IDEAL CUT ROUND BRILLIANT