



653423543

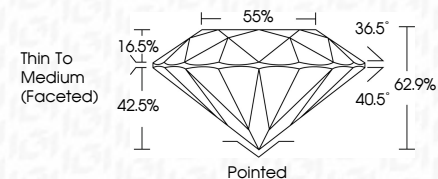
DIAMOND REPORT **ELECTRONIC COPY**



November 20, 2024
IGI Report Number 653423543
Description NATURAL DIAMOND
Shape and Cutting Style ROUND BRILLIANT
Measurements 6.28 - 6.40 x 3.99 mm

GRADING RESULTS

Carat Weight 1.00 CARAT
Color Grade D
Clarity Grade VS 2
Cut Grade EXCELLENT



November 20, 2024
IGI Report Number 653423543
Description NATURAL DIAMOND
Shape and Cutting Style ROUND BRILLIANT
Measurements 6.28 - 6.40 x 3.99 mm

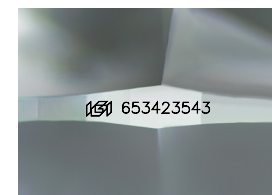
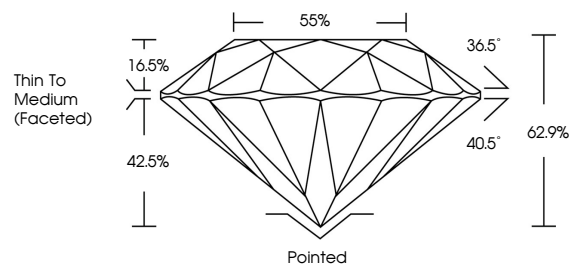
GRADING RESULTS

Carat Weight 1.00 CARAT
Color Grade D
Clarity Grade VS 2
Cut Grade EXCELLENT

ADDITIONAL GRADING INFORMATION

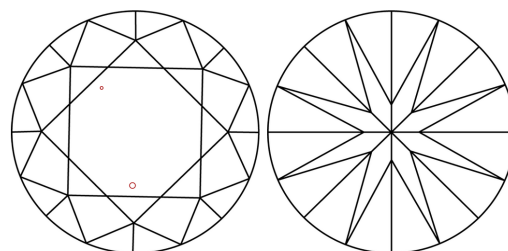
Polish EXCELLENT
Symmetry VERY GOOD
Fluorescence VERY SLIGHT
Inscription(s) IGI 653423543

PROPORTIONS



Sample Image Used

CLARITY CHARACTERISTICS



KEY TO SYMBOLS

Red symbols indicate internal characteristics.
Green symbols indicate external characteristics.

COLOR

D - F	G - J	K - M	N - R	S - Z	FANCY
Colorless	Near Colorless	Slightly Tinted	Very Light Color	Light Color	

CLARITY

IF	VVS ¹⁻²	VS ¹⁻²	SI ¹⁻²	I ¹⁻³
Internally Flawless	Very Very Slightly Included	Very Slightly Included	Slightly Included	Included

ADDITIONAL GRADING INFORMATION

Polish EXCELLENT
Symmetry VERY GOOD
Fluorescence VERY SLIGHT
Inscription(s) IGI 653423543



IGI

November 20, 2024
IGI Report No. 653423543
NATURAL DIAMOND
ROUND BRILLIANT
6.28 - 6.40 x 3.99 mm
Carat Weight 1.00 CARAT
Color Grade D
Clarity Grade VS2
Cut Grade EXCELLENT
Depth 62.9%
Table 55%
Grade Thin To Medium (Faceted)
Culet Pointed
Polish EXCELLENT
Symmetry VERY GOOD
Fluorescence VERY SLIGHT
Inscription(s) IGI 653423543