



**INTERNATIONAL
GEMOLOGICAL
INSTITUTE**

778689371

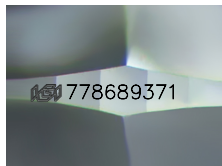


May 6, 2026
IGI Report Number 778689371
NATURAL DIAMOND
ROUND BRILLIANT
6.14 - 6.23 x 3.83 mm
Carat Weight 0.90 CARAT
Color Grade G
Clarity Grade VS 1
Cut Grade EXCELLENT
Polish EXCELLENT
Symmetry EXCELLENT
Fluorescence NONE
Inscription(s) IGI 778689371
Comments: IDEAL CUT ROUND
BRILLIANT

DIAMOND REPORT

ELECTRONIC COPY

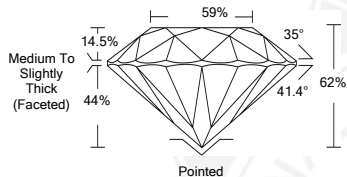
May 6, 2026
IGI Report Number 778689371
Description NATURAL DIAMOND
Shape and Cutting Style ROUND BRILLIANT
Measurements 6.14 - 6.23 x 3.83 mm



Sample Image Used

GRADING RESULTS

Carat Weight 0.90 CARAT
Color Grade G
Clarity Grade VS 1
Cut Grade EXCELLENT



ADDITIONAL GRADING INFORMATION

Polish EXCELLENT
Symmetry EXCELLENT
Fluorescence NONE

Identification Features CLOUD
Inscription(s) IGI 778689371
Comments: IDEAL CUT ROUND BRILLIANT



May 6, 2026
IGI Report Number 778689371
NATURAL DIAMOND
ROUND BRILLIANT
6.14 - 6.23 x 3.83 mm
Carat Weight 0.90 CARAT
Color Grade G
Clarity Grade VS 1
Cut Grade EXCELLENT
Polish EXCELLENT
Symmetry EXCELLENT
Fluorescence NONE
Inscription(s) IGI 778689371
Comments: IDEAL CUT ROUND
BRILLIANT

COLOR

D - F	G - J	K - M	N - R	S - Z	FANCY
Colorless	Near Colorless	Slightly Tinted	Very Light Color	Light Color	

CLARITY

IF	VVS ¹⁻²	VS ¹⁻²	SI ¹⁻²	I ¹⁻²
Internally Flawless	Very Very Slightly Included	Very Slightly Included	Slightly Included	Included

© IGI 2020, International Gemological Institute

FD - 10 20



THIS DOCUMENT WAS PRODUCED WITH THE FOLLOWING SECURITY MEASURES: SPECIAL DOCUMENT PAPER, INK SCREENS, WATERMARK BACKGROUND DESIGNS, HOLOGRAM AND OTHER SECURITY FEATURES NOT LISTED AND DO EXCEED DOCUMENT SECURITY INDUSTRY GUIDELINES.