



**ELECTRONIC COPY**

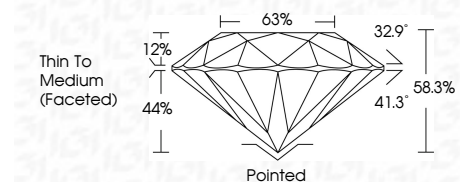
787629619  
Report verification at [igi.org](http://igi.org)



April 7, 2026  
IGI Report Number **787629619**  
Description **NATURAL DIAMOND**  
Shape and Cutting Style **ROUND BRILLIANT**  
Measurements **6.58 - 6.62 X 3.85 MM**

**GRADING RESULTS**

Carat Weight **1.00 CARAT**  
Color Grade **F**  
Clarity Grade **SI 1**  
Cut Grade **EXCELLENT**



**ADDITIONAL GRADING INFORMATION**

Polish **EXCELLENT**  
Symmetry **EXCELLENT**  
Fluorescence **NONE**  
Inscription(s) **IGI 787629619**



**IGI**

April 7, 2026  
IGI Report No 787629619  
**ROUND BRILLIANT**  
6.58 - 6.62 X 3.85 MM  
1.00 CARAT  
F  
SI 1  
EXCELLENT  
58.3%  
63%  
Thin To Medium (Faceted)  
Pointed  
EXCELLENT  
EXCELLENT  
NONE  
IGI 787629619

**DIAMOND REPORT**

April 7, 2026  
IGI Report Number **787629619**  
Description **NATURAL DIAMOND**  
Shape and Cutting Style **ROUND BRILLIANT**  
Measurements **6.58 - 6.62 X 3.85 MM**

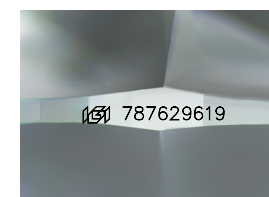
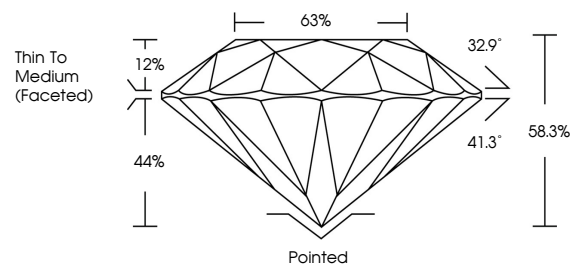
**GRADING RESULTS**

Carat Weight **1.00 CARAT**  
Color Grade **F**  
Clarity Grade **SI 1**  
Cut Grade **EXCELLENT**

**ADDITIONAL GRADING INFORMATION**

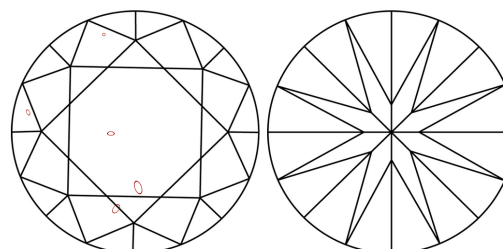
Polish **EXCELLENT**  
Symmetry **EXCELLENT**  
Fluorescence **NONE**  
Inscription(s) **IGI 787629619**

**PROPORTIONS**



Sample Image Used

**CLARITY CHARACTERISTICS**



**KEY TO SYMBOLS**

Red symbols indicate internal characteristics.  
Green symbols indicate external characteristics.

**COLOR**

D - F	G - J	K - M	N - R	S - Z	FANCY
Colorless	Near Colorless	Slightly Tinted	Very Light Color	Light Color	

**CLARITY**

FL	IF	VVS <sup>1-2</sup>	VS <sup>1-2</sup>	SI <sup>1-2</sup>	I <sup>1-3</sup>
Flawless	Internally Flawless	Very Very Slightly Included	Very Slightly Included	Slightly Included	Included

