



**ELECTRONIC COPY**

## LABORATORY GROWN DIAMOND REPORT

August 4, 2022	
IGI Report Number	LG538263291
Description	LABORATORY GROWN DIAMOND
Shape and Cutting Style	PRINCESS CUT
Measurements	6.16 X 6.11 X 4.52 MM
GRADING RESULTS	
Carat Weight	1.50 CARAT
Color Grade	G
Clarity Grade	VS 1
ADDITIONAL GRADING INFORMATION	
Polish	EXCELLENT
Symmetry	VERY GOOD
Fluorescence	NONE
Inscription(s)	LABGROWN IGI LG538263291
Comments: As Grown - No indication of post-growth treatment. This Laboratory Grown Diamond was created by Chemical Vapor Deposition (CVD) process.	

## PROPORTIONS

A diagram of a diamond-shaped cross-section with the following proportions:

- Top horizontal width: 66.5%
- Left vertical height (from top to bottom): 57.5%
- Left vertical height (from top to the 'Slightly Thick' section): 13%
- Right vertical height: 74%
- Bottom vertical height (from the 'Pointed' section to the bottom): 13%

The diagram includes labels for 'Slightly Thick' on the left and 'Pointed' at the bottom, indicating specific features of the cross-section.

LABORATORY GROWN DIAMOND REPORT  
LG538263291  
Report verification at [igi.org](https://www.igi.org)

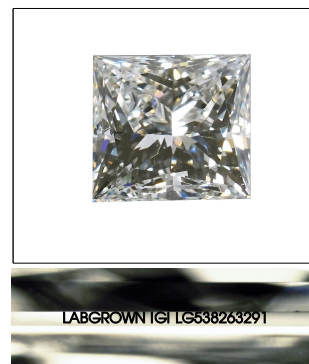
LABORATORY GROWN  
DIAMOND REPORT

## GRADING SCALES

CLARITY				
IF	VVS <sup>1-2</sup>	VS <sup>1-2</sup>	SI <sup>1-2</sup>	I <sup>1-3</sup>
Internally Flawless	Very Very Slightly Included	Very Slightly Included	Slightly Included	Included

**COLOR**

D E F G H I J Faint Very Light Light

LASERSCRIBE<sup>SM</sup>

Sample Image Used



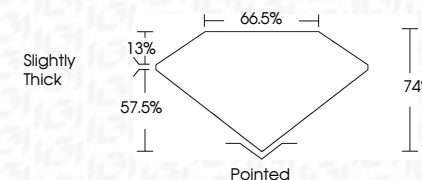
© IGI 2020, International Gemological Institute

FD - 10 20

**www.igi.org**

LABORATORY GROWN DIAMOND REPORT

August 4, 2022	
IGI Report Number	LG538263291
Description	LABORATORY GROWN DIAMOND
Shape and Cutting Style	PRINCESS CUT
Measurements	6.16 X 6.11 X 4.52 MM
<b>GRADING RESULTS</b>	
Carat Weight	1.50 CARAT
Color Grade	G
Clarity Grade	VS 1



### ADDITIONAL GRADING INFORMATION

Polish	EXCELLENT
Symmetry	VERY GOOD
Fluorescence	NONE
Inscription(s)	LABGROWN IGI LG538263291

Comments:  
As Grown - No indication of post-growth treatment.  
This Laboratory Grown Diamond was created by  
Chemical Vapor Deposition (CVD) process.



IG

On behalf of

*aether*

August 4, 2022	IG Report No. [LS93263291]	
PRINCESS CUT		
1.50 CARAT		
G		
VS 1		
74%		
66.5%		
Slightly Thick		
Polished		
EXCELLENT		
VERY GOOD		
NONE		
LARGROWN [GI		
LS93263291]		
Comments:		
As Grown - No indication of post-growth treatment.		
This Laboratory Grown Diamond was created by Chemical Vapor Deposition (CVD) process.		